

# NEWPORT HISTORICAL SOCIETY

## *History Starts Here*

FALL 2018 NEWSLETTER

VOLUME 8



INSIDE

New Websites ❖ 2018 Annual Report ❖ New Collections Access Online

# Director's Note

The Newport Historical Society is a collections and knowledge-based institution that seeks to educate people about topics we think they care about. In short, while we are a multifaceted organization, we are more or less a museum.

We are therefore, extremely interested in current explorations of the value of museums to society. But, for all of the obvious and expected expositions on the value of Museums – they are educational, they create a sense of wonder, they foster insight and understanding – I am not entirely sure that we truly know what museums are good at, and what they are good for. And in what is perhaps an even more relevant question, we must ask: how will museums remain valuable as the world inevitably changes?

Data collected from a variety of sources tells us that museum attendance, while up at some museums and down at others, is not growing, nationally, and may be falling as our population ages and changes. Certainly, we know that at our institution, “in real life” visitation at the Museum of Newport History is gently falling, even as our virtual visitation grows.

When I think about addressing this issue I begin by asking myself how we are framing the question we wish to explore. Because, of course, the way you frame a question will often naturally suggest the answer. I will argue, for example (and against some of my colleagues), that I think a likely reason for declining attendance is not just that potential visitors do not know how wonderful museums are, but rather that museums might be finding it difficult to change in ways that keep them accessible and relevant to the public. In other words, it is not “what’s wrong with them?” but rather, “what could we do better for them?”

There are some interesting ideas within the field about change in the museum world that may provide useful analytic frameworks. For example, it has been suggested that museums, as “keepers,” find change comfortable when they are adding new things to their repertoires, but really, really, uncomfortable when they think about deleting things they have always done.

So we are very comfortable being told that we need to add new, often digital offerings. And if we find that they

do not move the needle in terms of audience and funding, we think we need to add something else (say, a podcast). But we do not ask ourselves if what we are doing, across the board, is still of real interest to a broad audience. It may be that we have methods and programs that are just not that interesting, or financially sustainable, any more.

Consequently, the suggestion, often made, that NHS “just needs a bigger museum” may in fact be true, but it bears examining. The NHS Board and staff will be doing just this beginning in 2019. As we do so, we will question our museum audiences and participate in national surveys. We will use our new web presences to explore the needs and interests of our growing digital audiences. We will think hard about how our local community is comprised of residents with diverse needs and interests, and a large natural audience of tourists, who come here for a variety of reasons, and with expectations for their visit that are not always well documented.

Good data has a great way of challenging expectations as well as informing decision-making. As we look at the current data about our visitation, it is clear that a digital presence for Newport’s history must be an important component of any future work. But the growth in our History Space program’s reach demonstrates that there is value, right now, in in-person living history experiences, when done right. As we ask ourselves that hard question about how we can be our best, it is interesting that both new technologies and a classic interpretive technique are both appealing to our audiences.

We will incorporate all we are learning into developing plans for how the NHS continues to deliver Newport County’s history to a growing public audience. Watch this space!

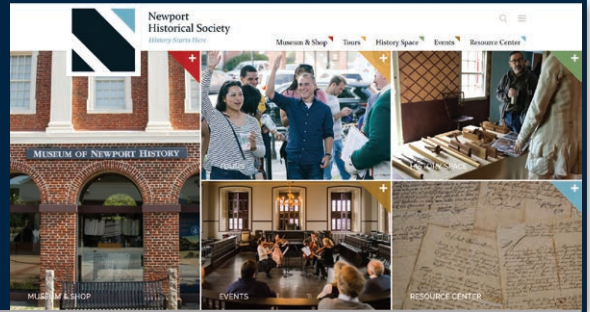


– Ruth S. Taylor, *Executive Director*



# WEBSITE LAUNCH

This December, NHS is launching three new websites, marking a major advancement for the Society's online presence:



## [www.NewportHistory.org](http://www.NewportHistory.org)

NHS' primary website has been completely redesigned. This was achieved through close work with the same design firm that NHS hired for its rebranding initiative in 2017. The new site features NHS' new color palette, design elements inspired by the new logo, and content structured to reflect NHS' five areas of activity: Museum and Shop, Tours, History Space, Events, and Resource Center. The site is media-rich, highlighting the extensive image and video content NHS produces, while also serving as a rich source of information about NHS programs and Newport history.

## [www.MappingNewport.org](http://www.MappingNewport.org)

**Mapping the Newport Experience** is an ongoing research initiative dedicated to documenting the urban history of Newport from colonial settlement to the present day in a series of case studies examining period maps, paintings, illustrations, photographs, and literary descriptions. The initiative is spearheaded by John Tschirch, NHS' Visiting Curator of Urban History, and it now has a website. The site showcases the project's first case study, which charts the evolution of Washington Square from its foundation

in the 17th century through the evolution of its streets, civic spaces and architecture in the Victorian age, and the revolutionary changes brought about by urban renewal in the 20th century. The site is designed to grow over time to include additional case studies.

## [www.collections.NewportHistory.org](http://www.collections.NewportHistory.org)

**Newport Historical Society Collections Online** is a new, publicly accessible website driven by data from NHS' Collective Access collections database. Its powerful search function allows users to search across all the Society's cataloged artifacts, photographs, and manuscript collections. Users can filter and narrow their searches, browse manuscript collection finding aids, send messages directly to NHS collections staff, and create accounts to leave comments or save and export information about objects. The new Collections Online website increases NHS' ability to provide access to our extensive collections. Of course, cataloging and digitization is an ongoing process, so the online catalog is not yet a complete representation of NHS' holdings. As we verify data and update our database, more items will be available for researchers online.



## Newport Historical Society

### Resource Center

82 Touro Street, Newport, RI 02840 | 401-846-0813  
Monday – Friday 10 to 4

### Museum of Newport History & Shop

127 Thames Street, Newport, RI 02840 | 401-841-8770  
Daily 10 to 5

### Properties:

**Colony House**, Washington Square, Newport

**Wanton-Lyman-Hazard-House**, 17 Broadway, Newport

**Great Friends Meeting House**, 22 Marlborough Street, Newport

**Seventh Day Baptist Meeting House**, 82 Touro Street, Newport

**Green End Fort**, Vernon Avenue, Middletown

For more information go to:

[NewportHistory.org](http://NewportHistory.org) | [ShopNewportHistory.org](http://ShopNewportHistory.org) | [NewportHistoryTours.org](http://NewportHistoryTours.org)

# 2019 Essay Competition

## Sponsored by the Newport Historical Society



## Big Ideas for a Changing World

Be In The Room Where It Happens! The Newport Historical Society's Third Annual Essay Contest is open to Rhode Island students enrolled in tenth grade in public and other tuition-free schools. Winners (and teachers) receive tickets to *Hamilton: An American Musical* in NYC.

Rhode Island is a place of firsts – innovation is in our blood! We were the first place

in the modern world to incorporate the revolutionary principle of religious freedom in our governing documents. That idea and the related concept of separation of church and state have gone on to sweep the world. Today, these principles are included in the U.S. Constitution, the Bill of Rights and the United Nations Universal Declaration of Human Rights. Just a little more than 100 years later, Rhode Islanders changed the world again – this time by starting the Industrial Revolution in America. What we will do next?

Students are asked to respond to this prompt:

What is happening now in your community, or what could be happening, that has the power to change the future in Rhode Island and potentially the world?

What's the prize for successfully recognizing this powerful change? A trip to New York City on May 11, 2019 to see a matinee showing of the

award-winning and genre-busting Broadway show, *Hamilton, An American Musical*; matinee, lunch and chartered bus transportation to and from New York City on May 11 included. Winners from each Rhode Island county will be selected. Teachers who sponsor this competition in their classes and have an award-winning student essay will also be invited to join us. The event, including bus trip, time in NYC and show will be chaperoned by teachers of winning students and by NHS staff. Tickets and trip are nontransferable.

Entries must be emailed or postmarked by March 15, 2019.

Winning papers will be announced by April 5, 2019. The prize trip will take place on May 11, 2019. For submission guidelines and to view past winning essays visit: [newporthistory.org/resource-center/academic-opportunities/essay-competition](http://newporthistory.org/resource-center/academic-opportunities/essay-competition)







The Newport Historical Society and friends came together on Saturday, September 22, 2018 to honor and celebrate the people of Newport, RI and their ancestors who served overseas and on the homefront during World War I. November, 2018 was the 100th anniversary of Armistice Day. The money raised at this event supports repairing the roof structure of the Great Friends Meeting House.



TOP: Invitation to the event and conversation before dinner.

ABOVE LEFT: Elizabeth Leatherman and Susan Jacquet, Co-Chairs of event.

LEFT: Elizabeth Drayton of the Newport Performing Arts Center and Lisette Prince.

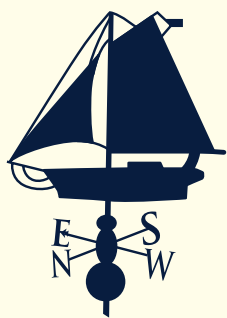
ABOVE: Brigadier General Peter Zwack making a toast to the men and women who have served and continue to serve. Living historians Matt Payson and Jessica Hanley with a 1918 car from Audrain Automobile Museum.

RIGHT: The Lafayette Band, Music Director Bethany Clark Bromley.

PHOTOS: ANDREA HANSEN







# THE NEWPORT SHOW

To Benefit the Newport Historical Society and  
the Boys & Girls Clubs of Newport County

The Newport Show: Antiques, Art and Exquisite Objects presented its 12th annual program this year. Like all activities at the NHS, it continues to evolve as our audience develops. With a more varied menu of dealers and a variety of price points, the Show continues to offer a deluxe shopping experience. This is true because of the value and rarity of the offerings, but also because visitors can learn as they browse from knowledgeable dealers, guest lecturers and NHS staff. 2018 was a banner year – the Gala was beautiful and fun, and visitation was high. So was the return to the two charities – a total of over \$110,000 each!

**Thanks to all who help make this happen,  
including our partners at the Boys & Girls  
Clubs of Newport County and, most  
especially, NHS Trustee and Show Chair  
Anne Hamilton.**



PHOTOS TOP TO BOTTOM:

Chair Mrs. S. Matthews V. Hamilton, Jr. and her daughter, Mrs. Daniel M. Benson.

Santee Saunders and Cameron Silver, TV personality, author and lecturer, with Ruth S. Taylor, Executive Director of the Newport Historical Society.

Preview Party Co-Chairs, Norey Dotterer Cullen, Mrs. Peter D. Kiernan III, Mrs. John M. Damgard, Mrs. James B. Gubelman, Mrs. John S. Palmer, and Mrs. S. Matthews V. Hamilton.

PHOTOS: ANDREA HANSEN

LEFT: Patrick Ahearn, architect, author and lecturer at The Newport Show. PHOTO RANDI BAIRD





# THE NEWPORT SHOW 2018

## CHAIR

Mrs. S. Matthews V. Hamilton, Jr.

## HONORARY CO-CHAIRS

Mrs. Robert H. Charles

Mrs. John R. Donnell

## PREVIEW PARTY CO-CHAIRS

Norey Dotterer Cullen

Mrs. John R. Damgard

Mrs. James B. Gubelman

Mrs. Peter B. Kiernan III

Mrs. John S. Palmer

## PRESENTING SPONSOR

Citizens Commercial Banking

## GALA PREVIEW PARTY SPONSOR

Franklin & Company, Design Associates

## GOLD SPONSORS

BankNewport & OceanPoint Insurance

Caswell-Massey

Kempenaar Real Estates, Inc.

Kingstone Insurance

## CONTRIBUTING SPONSORS

Antiques & Fine Art Magazine

Corrigan Financial

Freeman's Auctioneers and Appraisers

## MEDIA SPONSORS

*American Fine Art Magazine*

*Design New England Magazine*

*The Magazine Antiques*

*New England Home Magazine*

*The Newport Daily News*

Rhode Island Public Radio

## SHOW MANAGER

Diana Bittel

## FOUNDERS

Irene Roosevelt Aitken

Mr. A. Leslie Ballard and

Mr. and Mrs. Mark D. Hull

Dr. Holly Bannister and

Mr. Doug Newhouse

Merrilyn Bardes

Mr. and Mrs. Richard I. Burnham

Minnie and Jimmy Coleman

Kim and Glenn Darden

Mr. and Mrs. John Damgard

Mrs. John R. Donnell

Jacalyn and Bill Egan

Mr. and Mrs. Robert B. Evans

Pamela and David B. Ford

Bernard S. and Sarah M. Gewirz

Mr. and Mrs. Robert M. Grace

Laurie & Peter Grauer

Mr. and Mrs.

S. Matthews V. Hamilton, Jr.

Elizabeth and William Kahane

Mr. and Mrs. Roger E. Kass

Mr. and Mrs.

Peter DeLacy Kiernan, III

Elizabeth and Bill Leatherman

Mr. Peter E. Madden

Dr. Shirley Madhere and

Edward M. Weil, Jr.

The Honorable Juliette McLennan

Anne Owen

Susan and George Petrovas

Diana Prince

Shelley and Nicholas Schorsch

Jeremiah and Lorna Shafir

Luise M. Strauss

Happy van Beuren

Archbold D. and

Helene van Beuren

Barbara van Beuren

Diane B. Wilsey

## PHOTOS TOP TO BOTTOM:

Martha Stewart and friend.

Show Manager Diana Bittel.

William and Alison Vareika.

The Newport Show volunteers from the Boys & Girls Clubs of Newport County, with Founders Bill and Jacalyn Egan. PHOTOS: ANDREA HANSEN



# RECENT ACQUISITIONS



## VERNON CLOTHING: MAN'S PINK SUIT

Gift of April Neeble, Terry Partlon, and Shelley Partlon (2018.028)

This 18th century men's suit, which likely dates from the 1770s, consists of a jacket and matching breeches. The fashion fabric is a fine light pink silk satin; the coat's front, skirt and sleeves are lined with silk, the coat's back is lined with linen. Although the pink silk has faded with time, evidence seen around the area of the fabric that would not have been heavily exposed to light suggests that it was originally a pale pink and not a vibrant pink.

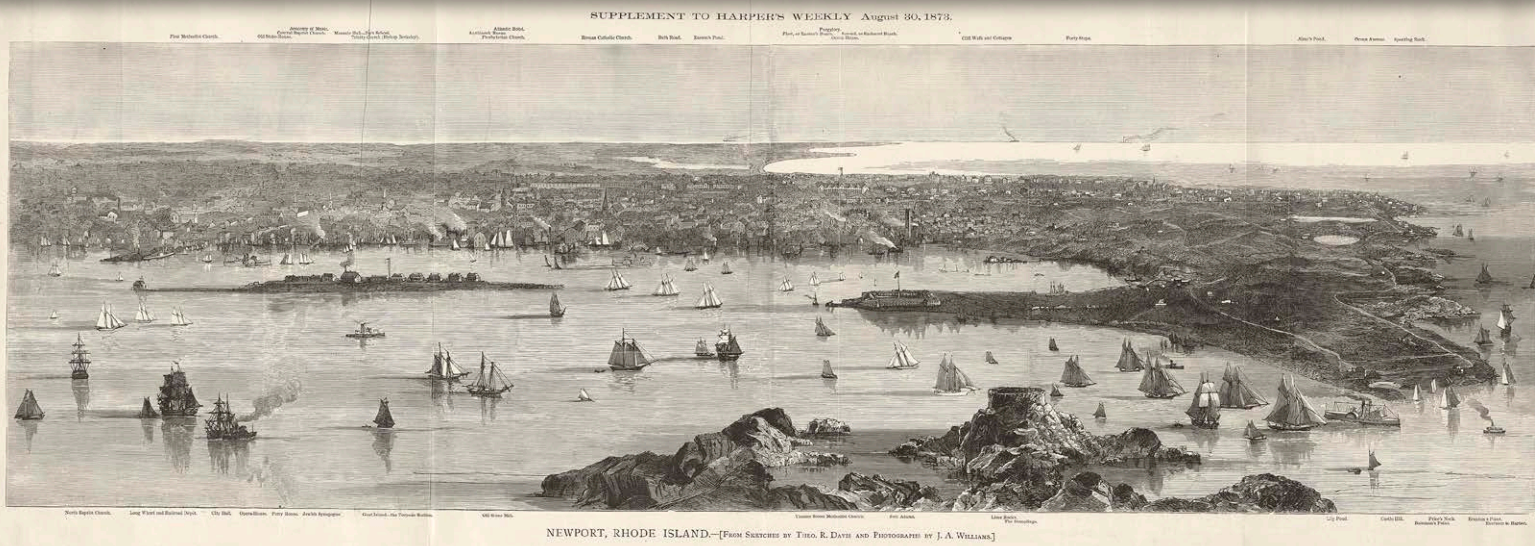
The coat features cuffs, pockets, a hook and eye closure at the neck, a narrow standing collar and self-covered buttons. The breeches feature self-covered buttons, a fob pocket as well as a steel buckle closure at the center back strap. The pink silk's green selvedge can be seen along the side knee opening showing how garments from this era are carefully cut to waste as little fabric as possible.

While pink may seem like an unlikely choice for menswear today, it was a popular color for men in the 18th century. This suit would have been worn for special occasions and paired with one of the two embroidered waistcoats to show the wearer's sophisticated taste.

Family history tells us that William H. Vernon, son of the Newport merchant, wore these clothes to court when he went to France before the French Revolution.







## WOOD ENGRAVING

Museum Purchase (2017.021)

Wood engraving of Newport Harbor created from sketches by Theodore R. Davis and photographs by J.A. Williams, published in *Harper's Weekly* on August 30, 1873.

This image depicts a very busy Narragansett Bay on a summer day full of steamships, merchant sailboats and yachts. In the foreground stands the ruined turret of old Fort Dumlupınar on the south coast of Jamestown. Also visible is the US Naval Torpedo Station on Goat Island, Fort Adams, and the mostly undeveloped pastureland of Brenton Point and Castle Hill.

## MAP OF THE TOWNSHIP OF NEWPORT WITH PART OF MIDDLETOWN

Loan from Anne Hamilton (L.2017.001)

Charles Hammett, Jr. circa 1860.

This map shows the southern end of Aquidneck Island and the urban center of the City of Newport, which grew from the original 1712 street map of John Mumford depicted in the left insert, also in the Newport Historical Society's collections. Large open spaces of farmland can be seen on the north and south ends of the city and the strip of Bellevue Avenue shows the very beginnings of subdivisions and mansion building. Above Newport is the Town of Middletown, almost exclusively agricultural and still owned by old Yankee families. Marshes, streams and geological outcroppings can be seen in places now covered in shrubs, woodlands and house lots.





# History Space

The Newport Historical Society's History Space initiative uses costumed interpretation to bring the past to life. Visitors experience the past as living historians share insight on a particular aspect of Newport and Rhode Island's early history. Events range from programs that recreate a specific historical event to lectures by a speaker in period clothing, from sharing the process of 18th century trades to highlighting aspects of colonial life through the lens of a specific topic. During the last fiscal year over 1,000 visitors attended our History Space programs.

*Mark your calendar and join us in 2019!*



Living Historians at *After Dark* at the John Brown House.

## Past Programs

**April 19, 2018 – John Brown House, Providence, RI**

*After Dark: Browns, Bad Boys, and Boudoirs\**

During this unique tour of the Rhode Island Historical Society's John Brown House, visitors encountered first person historical interpreters portraying members of the Brown family and their servants as they discussed evening life from 1790 Providence.

**May 3, 2018**

*Undressing History: Women's Clothes and Unmentionables from the 19th Century\**

Historical costumer Carrie Midura shared some of the secrets (and stuffing) that were hidden beneath the leg-o-mutton sleeves and shelf-like bustle gowns of the 19th century. If you missed this program, visit our YouTube page to watch this talk.

**May 19, 2018**

*18th Century House Joiner Demonstration*

A little rain didn't keep visitors away from the Wanton-Lyman-Hazard House when expert house joiner and historic interpreter Dan Lacroix discussed the process of transforming rough lumber into the elements of a finished 18th century home.



Dan Lacroix, (right) historic interpreter, demonstrating joinery and planemaking at the Wanton-Lyman-Hazard House.





Living historian Matthew Mees at *What Cheer Day* at the John Brown House.

**June 2, 2018 – John Brown House, Providence, RI**  
***What Cheer Day: Life After the Gaspee Affair\****

Two dozen living historians recreated what life was like in 1772 Rhode Island in the weeks and months after the burning of HMS *Gaspee*. Visitors were invited to help solve the mystery of who was responsible for *Gaspee*'s destruction.

**July 21, 2018**  
***Newport's French Occupation***

Living historians Matthew and Elizabeth Mees portrayed Jeremiah and Mehitabel Wadsworth in the yard of the Wanton-Lyman-Hazard House. Visitors learned what life was like in 1780 Newport when thousands of French troops arrived to aid the American Army in the fight for independence.

**August 25, 2018**  
***Life During the 1778 Battle of Rhode Island***

The 5th annual living history event marked the 240th anniversary of the month-long Battle of Rhode Island and the British occupation. Nearly 80 living historians recreated life through stations and interpretative scenarios at Washington Square, the Colony House and the Wanton-Lyman-Hazard House. See our YouTube page for a video featuring this event.

**November 17, 2018**  
***Redcoats at the Redwood, Redwood Library†***

Using interpretative stations around the Redwood Library, including creating a British Officer's Club in the Harrison Room, visitors interacted with two dozen living historians who portrayed members of the British Army or the Royal Navy along with loyalist citizens.

\* Presented in partnership with the Rhode Island Historical Society.

† Presented in partnership with the Redwood Library and Athenaeum.



TOP: Image from History Space event  
*Newport's French Occupation.*

ABOVE: Living historians at Newport Historical Society's  
 Fifth Annual Living History event *Life During the 1778  
 Battle of Rhode Island*. PHOTO: CAROLINE GODDARD





## Lectures

### ***"I am an honest woman" Female Revolutionary Resistance along the New England Seacoast***

Thursday January 10, 2019, 5:30 PM / NHS Resource Center

Dr. Emily Murphy, Curator for the National Park Service at Salem Maritime National Historical Site, will discuss the political spinning bees of the New England seacoast in the late 1760s and early 1770s, including several that took place in colonial Newport. This presentation will examine how middle-class women participated in resisting the importation of British Goods in the years leading up to the American Revolution.

### ***Undressing History: Active Pursuits, Women's Sportswear circa 1900\****

February 28, 2019, 5:00 PM / Aldrich House, Providence, RI  
March 28, 2019, 5:30 PM / NHS Resource Center

Join Quinn Burgess for a look at the clothing women wore to participate in sports and athletic activities during the late 19th and early 20th centuries. During this talk, Quinn will dress in reproduction historical sportswear from 1885 to 1925 including ensembles for tennis, ice skating, bicycling, croquet, and swimming. She will discuss the cultural context of women's participation in athletic activities during this time along with the garments themselves: how they functioned while being worn for active pursuits, what they were made from, and how the silhouettes compared to non-sports clothing. All garments shown and discussed will be available to touch and look at in detail at the close of the presentation.

\* Presented in partnership with the Rhode Island Historical Society.

## NHS Winter Festival Events

February 15 – 24, 2019

The Museum of Newport History & Shop at the Brick Market  
127 Thames Street, Newport RI, / 401-841-8770  
Open Daily / 10 AM

Exhibits by the Newport Historical Society offer an engaging introduction to Newport from the 1600s through the Gilded Age. Ask about our family friendly self-guided tour activity, "Junior Curator." Museum admission is by donation. Receive a 20% shopping discount with Newport Winter Festival button.

### ***A Revolutionary Spinning Bee: A History Space Event***

Saturday, February 16, 10:00 AM – 1:00 PM / Colony House,  
Washington Square, Newport

Join a team of living historians portraying Daughters of Liberty as they recreate one of the many political protest spinning bees that took place in Newport in the years leading up to the Revolutionary War. Ladies will card wool, spin it into flax and discuss the process of turning flax into fabric. Costumed interpreters will share insights on life in colonial Newport and discuss the non-importation agreements and explain why women would take the time to make homespun fabric instead of purchasing it. Admission is free, donations welcome.

## Walking Tours

All tours begin at 11:00 AM at The Museum of Newport History & Shop, 127 Thames Street, Newport. \$15 per person, \$12 with Newport Winter Festival button, \$10 with button for repeat tour guests. Weather permitting; space is limited. 401-841-8770.

### ***Road to Independence***

Saturday, February 16 / Tuesday, February 19 /  
Friday, February 22

Riots and rebellion, enemies and allies! Learn about Newport's role in the American Revolution.

### ***Discover Colonial Newport***

Sunday, February 17 / Wednesday, February 20 /  
Saturday, February 23

Hear stories of revolution and ruin, struggles for religious liberty and remarkable entrepreneurship among Newport's diverse people.

### ***Rogues and Scoundrels***

Monday, February 18 / Thursday, February 21 / Sunday, February 24  
See where scoundrels lived, pirates profited, and criminals were punished. Find out why this colony was known as "Rogue's Island."





## Exhibit

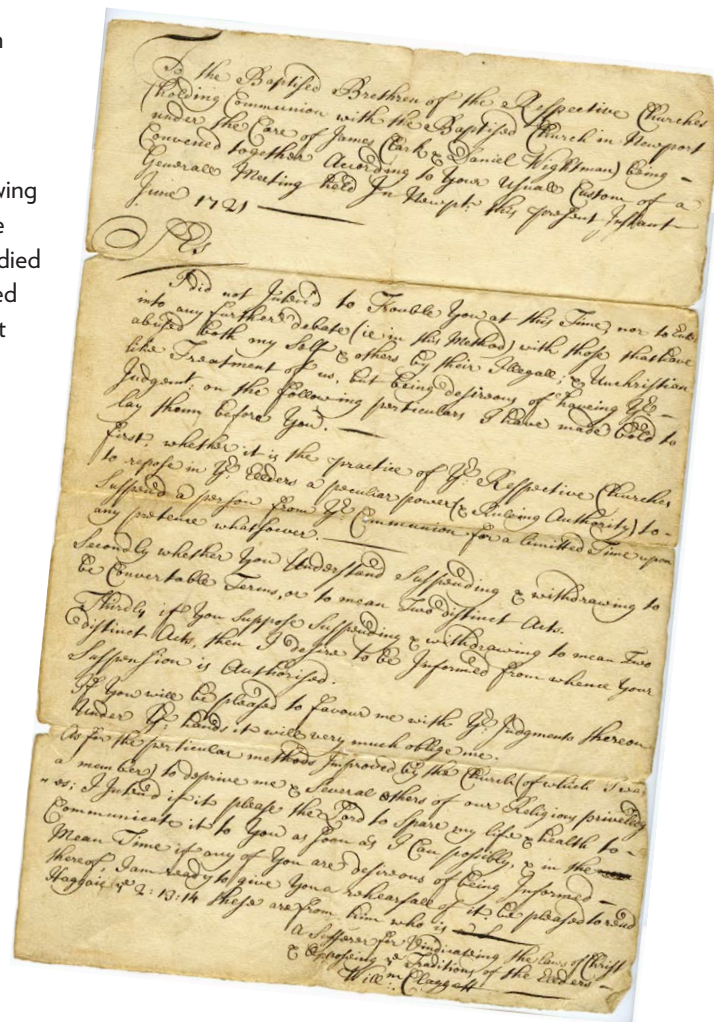
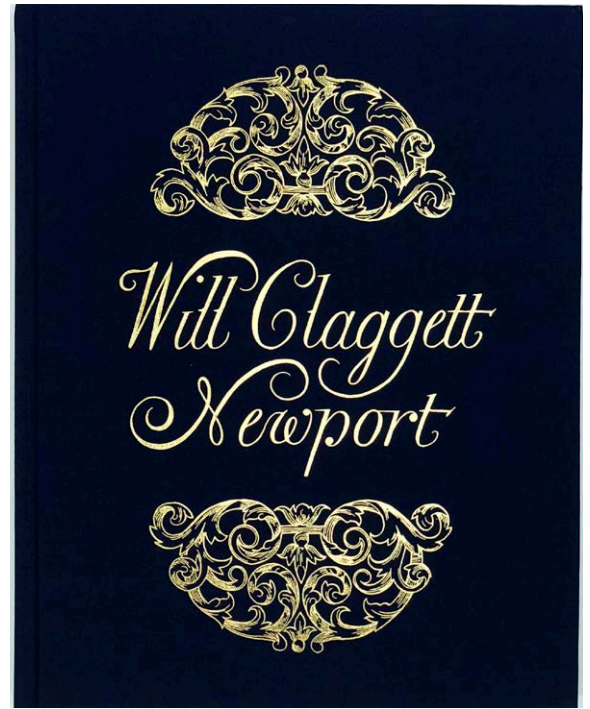
### *"My small Ability" The Life and Work of William Claggett*

December 13, 2018 – September 20, 2019  
NHS Resource Center

William Claggett was a master clockmaker in mid-18th century Newport. But the story of his life tells us about more than clock-making. By looking at what we know about Claggett, we can discover a great deal about Newport in the mid-18th century. Trade, artistry, aesthetics, science, religion, and culture can all be examined through the story of this exceptional man, in this exceptional city.

As Claggett participated in the market for Newport luxury goods, which served a growing cohort of wealthy Newporters and an active national and international trade, he also studied "natural science" and theology, and designed dramatically beautiful graphic elements that stand the test of time.

Join us to see what life in Newport looked and felt like as we celebrate the creation of some incredible timepieces that are also works of art.



# NHS Joins Fellowship Consortium

The Newport Historical Society has been accepted into the New England Regional Fellowship Consortium, a collaboration of 27 major cultural agencies, that support work in a broad array of fields, including but not limited to: history, literature, art history, African American studies, American studies, women's and gender studies, anthropology, sociology, philosophy, religious studies, environmental studies, oceanography, and the histories of law, medicine, and technology. Inclusion of the Newport Historical Society in the NERFC will serve to connect our holdings to other prestigious New England institutions and enhance greatly the scholarship of Fellows in the fields of history and related field.

## Participating Institutions:

Baker Library, Harvard Business School  
Boston Athenæum  
Boston Public Library, Norman B. Leventhal Map Center  
John J. Burns Library, Boston College  
Chapin Library, Williams College  
Colonial Society of Massachusetts  
Congregational Library and Archives  
Connecticut Historical Society  
Francis A. Countway Library of Medicine  
Mary Baker Eddy Library  
Harvard Law School Special Collections  
Harvard University Archives  
John Hay Library, Brown University  
Historic Deerfield  
Houghton Library, Harvard University  
Maine Historical Society  
Massachusetts Historical Society  
Mystic Seaport  
New England Historic Genealogical Society  
New Hampshire Historical Society  
Osher Map Library and Smith Center for Cartographic Education, University of Southern Maine  
Rauner Special Collections Library, Dartmouth College  
Rhode Island Historical Society  
Schlesinger Library, Radcliffe Institute  
Sophia Smith Collection at Smith College  
University of Vermont Special Collections  
Vermont Historical Society

## STAFF MEMBER PROFILE

### Bridget Hall

Bridget Hall joined the staff of the Newport Historical Society as a Public Engagement Associate in November of 2018. She recently graduated Summa Cum Laude from University of Rhode Island with a double major in History and Political Science.



Before joining NHS

Bridget worked as a museum educator at Mystic Seaport after completing the Williams-Mystic program in the Spring of 2017. Bridget's grandmother is a Newport native and instilled in her an interest and appreciation for Newport's past, which is something she looks forward to sharing with visitors through her new role at NHS. Please stop by the Museum of Newport History and Shop to meet Bridget and welcome her on board!

## IN MEMORIAM

### MELANIE DELMAN

The Newport Historical Society was saddened by the death of Melanie Delman on September 22, 2018. She was a leader in the luxury real estate market and a supporter of the Newport Historical Society. Since her 2004 purchase and award-winning restoration of The Tavern building at 3 Memorial Boulevard, Newport, RI, Lila Delman Real Estate worked closely with NHS to furnish accurate data on historic properties. Lila Delman Real Estate was a founding sponsor of the NHS's app "Explore Historic Newport," (accessible 2012-2017). Her love of Newport and historic properties statewide will surely continue through her dedicated staff.



## NEWPORT HISTORICAL SOCIETY MEMBERSHIP

# *Join Us!*

Social media has taught organizations like ours that many people who are interested in history, or in our community generally, want to feel engaged as part of a community. Membership is our way of creating that community, offering those who subscribe a chance to read our publications, see our e-newsletters, research our archives and collections, and attend our programs and lectures.

Become a member of the Newport Historical Society so that you too can “like” what we do and enjoy the benefits:

- ◆ Free admission to Newport Historical Society properties
- ◆ Reduced rates for tours, programs, lectures and events
- ◆ Subscription to Society publications
- ◆ 20% discount on purchases made at the Museum of Newport History & Shop
- ◆ Discounted image and document production
- ◆ Recognition in publications and Annual Report

To become a member, visit [NewportHistory.org](http://NewportHistory.org).

Memberships may also be purchased at  
The Museum of Newport History & Shop,  
127 Thames Street, Newport, RI  
or by phone at 401-846-0813 x10.

*Thank you to our business members:*





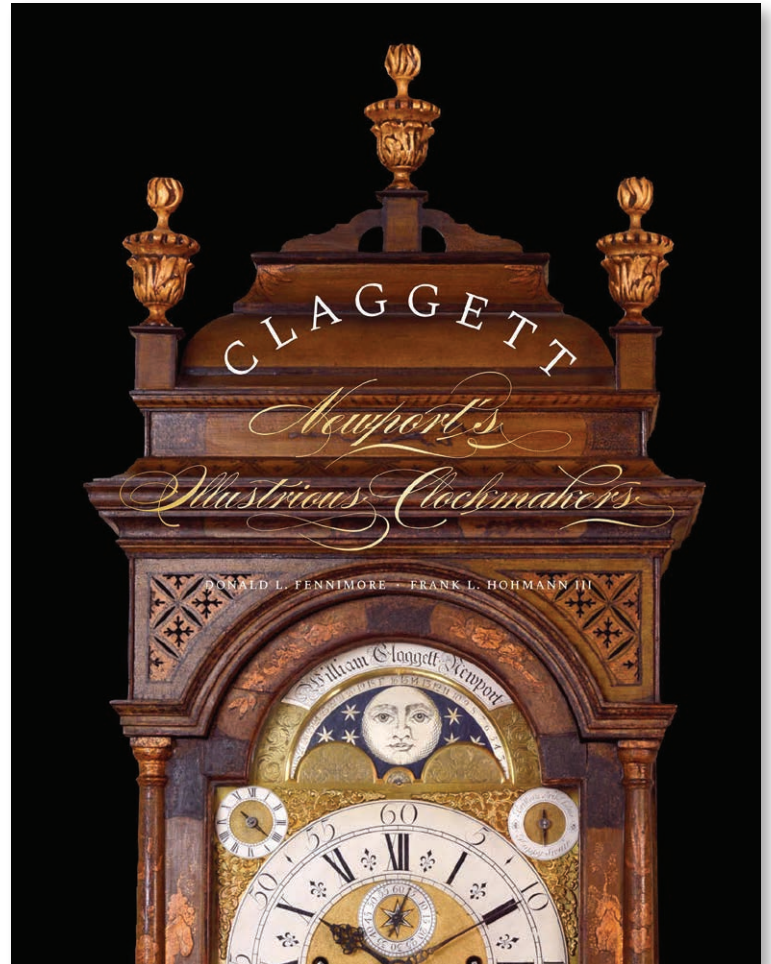


## *Museum of Newport History: Enter through the Gift Shop*

While the *act of exiting through the gift shop* has become a trope most people have come to expect, Museum of Newport History Shop instead aims to serve as a starting point in introducing visitors to the Newport Historical Society. By focusing on curated products surrounding Newport stories and creating custom merchandise that portrays various images and objects from the collection, the Museum Shop is designed to spark interest in Newport history.

A recent addition to the Shop is a section on maps, navigation, and time-keeping, where one can find products that range from compasses, sextants, and globes, to wall art and decorative trays, to a vast assortment of books on cartography, atlases, and navigation. Time and place are central themes in Newport's historical narrative, and gifts that reinforce this include reproduction nautical navigation instruments, like the ones that guided 17th and 18th century trading vessels around the world.

The Newport Historical Society's exhibit, *"My small Ability" The Life and Work of William Claggett* is highlighted in this section of the Shop which includes several pieces of custom merchandise, including round purse mirrors with images from Claggett's clocks, original Newport history neckties, and a journal made with the image of 18th century currency, among other items. The beautiful companion book to the exhibit, *Claggett: Newport's Illustrious Clockmakers* by Donald L. Fennimore, Frank L. Hohmann, and Dennis Carr, shown above, anchors various products focused on timekeeping, decorative arts, and crafts in Colonial Newport.



By curating products around various aspects of Newport history and creating custom merchandise, virtually everything in the store has the potential to spur someone's interest in Newport history and serve as a starting point for their exploration into the city's past. While endlessly interesting items refer to the past, they are also relevant and diverse, like the city of Newport today.

127 Thames Street, Newport, RI | 401-841-8770 | Open Daily 10 – 5

Shop online with \$1 shipping at: [ShopNewportHistory.org](https://ShopNewportHistory.org)

All members receive a 20% discount in the Museum of Newport History Shop. Purchase your annual membership today at [ShopNewportHistory.org](https://ShopNewportHistory.org)





# Annual Report

## 2017



framing as a forefard Coast they  
damned them by to proaking  
well as their own Condemnation if  
right I hope I shall give I would  
of your practices in order to  
their own heads that have ended  
of  
William Claggett

If you will be pleased to call for my letter  
sent to the Church bearing date Jan. 12<sup>th</sup>  
1720, you may judge of my Selves there by  
of Equity of my proceedings  
Newport June 16<sup>th</sup>  
W Claggett  
1721

of you in parti  
hurther

78<sup>r</sup> 1721

From the Baptized Church of Christ  
on Rhode Island whereof James Clarke  
Wightman and Elders To Elder Daniel  
Sendeth Greeting

## A Just Vindication

Being a Reply to Certain Acc  
contained in a Letter Signed by  
Claggett bearing Date January 9<sup>th</sup>  
and directed to the Baptized Ch  
Newport whereof James Clarke  
Wightman are Elders

First, you accuse the Church of being guilty  
of a great Disorder & Weakness in suffering  
Elders to Assume & Improve that Power  
which Christ Invested us with the which  
you say was not in our power to part  
nor in theirs to receive it  
in this Accusation you have not told  
us what our great Disorder & Weakness doth  
consist in so that you have left us to guess at  
the meaning the Which from the general  
of your discourse & other  
to be the Elders  
To the

Whereas we have informed by our Representatives  
Meeting in Kingston the beginning of this present Instant  
Several things of an Infamous Nature brought against  
persons who gave the Elders and Brethren cause  
uneasiness and dissatisfaction so that they could not  
have Communion with you until you had either  
them, or had made a Just and Religious Satisfaction  
further that it was then and there unanimously  
Elders that both yourself and also the Brethren at  
doth and always did belong to this Church as being  
and that therefore if ever their opinion that you  
by us And be Examined by and Accountable to us  
at Providence

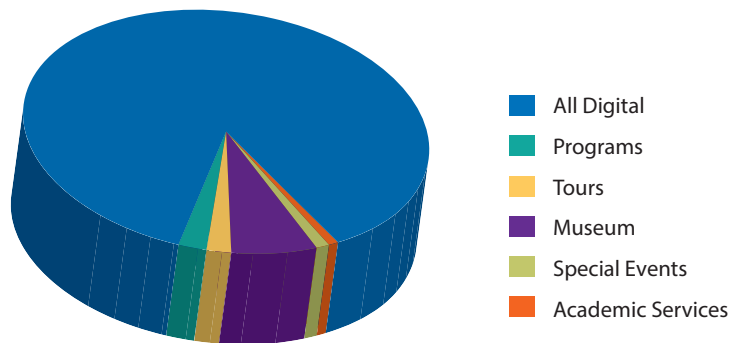
There are therefore Accordingly truly to the Desire  
that as you tender the Peace and Union of  
and as you will discharge that Christian duty and obli  
by Endeavouring as much as in you lies to disburse  
who suppose themselves to be Justly aggrieved by you  
fifth day Meeting upon the fifth day of the Month  
and make Answer to those things that may be the  
you as being the Matter of our Trouble and Dissatisfac  
time we interest you



# VISITATION

Visitation numbers are often hard to compare year to year, as our program menus are not static, so we are not always comparing like to like. What is clear, however, is that digital engagement is growing, and our Museum audience is declining – though we know that folks who visit still enjoy what they see.

Academic Services statistics show pretty steady usage by approximately 4-5 visiting researchers each week, and regular requests by the media for photo services by our staff. The growth in “Ready Reference” includes tracking the services we provide to visitors to Newport who want to know “where do I go from here.”

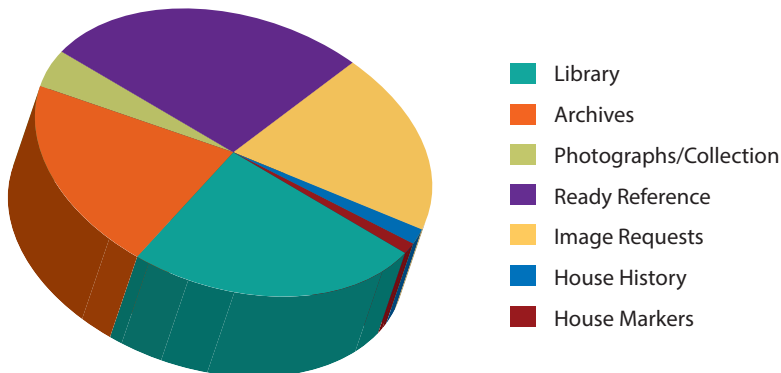


## Total Visitation

2017/18 2016/17

All Digital . . . .	142,487	135,879
Programs . . . . .	2,704	1,557
Tours . . . . .	3,145	3,476
Museum . . . . .	12,187	18,550
Special Events . .	1,735	2,137
Academic Services . . . . .	766	582

**Total . . . . . 163,024 162,181**



## Academic Services Visitation

### Appointments

Library . . . . .	101
Archives . . . . .	104
Photographs/Collection . . . .	26

### Services

Ready Reference . . . . .	431
Image Requests . . . . .	80
House History . . . . .	13
House Markers . . . . .	11

**Total . . . . . 766**



# EDUCATION

## Museum Attendance

### Newport History Tours

#### WALKING TOURS

Discover Colonial Newport

Golden to Gilded

Holiday Lantern

Road to Independence

Rogues & Scoundrels

#### SITE TOURS

Colony House

Great Friends Meeting House

Seventh Day Baptist Meeting House

Wanton-Lyman-Hazard House

#### TOURS OF THE MONTH

A Gardeners History of Bellevue Landscapes

Bricks, Sticks and the Vernon House

Creative Survival: 18th & 19th century African  
Community in Newport

Road to Independence and the Colony House

Rum and Revolution

Spring Forth: A Walking Tour of Newport's  
Colonial Origins

The American Revolution with a Tot of Rum

The British Occupation of Newport

The Common Burying Ground

The Townsends & Goddards: Newport's  
Legendary Cabinetmakers

Victorian Newport: The Kay-Catherine Historic District,  
April Tour of the Month

Working on the Point: Colonial Newport

## Group Tours Attendance

#### SCHOOL GROUPS

St. Georges School

N. Providence High School

Orchard Farms Elementary

RI Home School Group

Barrington Middle School

Providence Country Day School

Salve Regina

Roger Williams

Cape Cod Academy

St. Joseph's School

Community Prep School

Meadowbrook Elementary

Gaudet Middle School

University of Delaware

### History Space Events

18th Century House Joiner Demonstration

Cider Production in 18th Century Newport

Colonial Career Fair: Annual Winter Living  
History Event

Life in 1777 Newport: Featuring life during the British  
military's occupation of Newport and period artisanship  
leather working

Life in Colonial Newport at the Wanton-Lyman-Hazard  
House, Broadway Street Fair

Meet an 18th Century Doctor: A Living History Talk  
with Dr. Hunter

Myth, Memory, History and Heritage: Panel Presentation  
by Public Historians

Undressing History: Women's Clothes & Unmentionables  
from the 19th Century

# EDUCATION

## History Space Partnership Programs

What Cheer Day: Life After the Gaspee Affair,  
Rhode Island Historical Society  
After Dark at the John Brown House,  
Rhode Island Historical Society

## Special Events

The Newport Antiques Show  
Ulysses S. Grant meets Ida Lewis: An Evening of  
Culinary Indulgence  
Holiday Sip & Shop at the Colony House

## Programs

**Annual July 4th Open House at the Colony House**  
**First Freedom Open House Tour of the Great Friend Meeting House & Seventh Day Baptist Meeting House,**  
a collaborative program  
**Three Days of Peace & Music,** Newport Antiques Show  
lecture by photographer Elliot Landy  
**Newport Antiques Show Booth Talks,** by Diana Bittel  
Antiques, Paul Vandekar of Vandekar of Knightsbridge,  
Lori Cohen from Arader Galleries, Karen DiSaia from  
Oriental Rugs Ltd., and Peter Tinkler from the Silver Vault  
**Project Presentations by the Buchanan Burnham  
Summer Scholars in Public History**  
**A Culture of Corruption: The Apothecary's Tale,**  
lecture by Dr. Elaine Crane  
**Newport Historical Society Annual Meeting:**  
The New Newport Historical Society  
**Restored, Redeveloped and Righteously Indignant:**  
Newport in the 1960s, lecture by John Tschirch  
**Redcoats Among Rebels: British Soldiers and Newport  
Citizens, 1777,** lecture by Don Hagist  
**A Family and a Fortune,** lecture by Rebecca Fraser  
**Holiday Open House at the Colony House, featuring  
18th century hymns**



Living Historians engage with visitors at *Life During the 1778 Battle of Rhode Island* History Space event, August 2018. PHOTO: CAROLINE GODDARD

**“Hot Dogs” and a “Great” War: The First World War, Admiral William S. Sims, and Baseball, 1917-1918,**  
lecture by David Kohnen

**Newport's Spring Site Findings,** presentation by the urban spelunking team Roma Sotteranea

**Grappling With Legacy,** lecture by Sylvia Brown presented with Emmanuel Church

**Musical Pioneers,** Concert by the Newport String Project

**Hidden Presence: God's Little Acre and Beyond,**  
lecture by Glenn Knoblock

**Till its Over, Over There: Rhode Island Industry and the First World War,** lecture by Morgan Grefe

**The Palatine Wreck: The Legend of the New England Ghost Ship,** lecture by Jill Faranelli

**Monument to Perseverance,** lecture by Jim Ricci



# EDUCATION

## Workshops

**Pressed Botanicals: flower pressing workshop**

**Rhode Island Memories: The Early Years,**  
a Pediment Group scanning session hosted by the  
Newport Historical Society

**Your Cut of History: Custom Silhouettes**

## Brick Market Book Club

March – *Craeft: An Inquiry Into the Origins and True Meaning of Traditional Crafts* by Alexander Langlands

April – *If Jane Should Want to be Sold* by Marjory Gomez O'Toole, author attended this discussion

May – *African American Historic Burial Grounds and Gravesites of New England* by Glenn Knoblock, author led discussion after lecture

June – *The Poison Plot* by Elaine Forman Crane

## Exhibits

**Mapping the Newport Experience: A History of the City's Urban Development**

by John Tschirch at the Newport Antiques Show

**Makonde African Sculpture**

Collaboration with the Newport Middle Passage Port Market Project

**Recent Acquisitions**

March 2018-Nov. 2018, Resource Center Gallery

## Newport History Videos

February 2018: **Meet an 18th Century Doctor: A Living History Talk with Dr. Hunter**

Between 1755-1756 the first anatomical and surgical lectures in the Colonies were presented by Dr. William Hunter at the Newport Colony House. During this History Space event, historical interpreter Seán O'Brian portrayed Dr. Hunter and recreated aspects of these lectures in the location where they originally took place.

March 2018: **Newport Spring Site Findings**

Findings of the urban spelunking team after they journeyed into the underground structure at the Newport Spring Site.

March 2018: **Myth, Memory and Heritage**

The Newport Historical Society and the Rhode Island Historical Society hosted a joint program which featured a panel discussion from public historians.

May 2018: **Undressing History: Women's Clothing and Unmentionables from the 19th Century**

During this talk, historical costumer Carrie Midura shared some of the secrets (and stuffing) that were hidden beneath the leg-o-mutton sleeves and shelf-like bustle gowns of the 19th century. A History Space event presented in partnership with the Rhode Island Historical Society.

June 2018: **A Monument to Perseverance: The Monument to Build the Newport Bridge, 1945-1969**

Jim Ricci illuminated the struggle to build the Newport bridge from its original momentum following World War II to its opening in 1969 along with the technological innovations employed in its construction and its emergence as a cultural icon.

## Writing Your Way to Hamilton- Big Ideas for a Changing World Essay Contest Winners

**Sophie Amore**, Toll Gate High School

**Leslie Campbell**, Middletown High School

**Ethan Corriveau**, North Smithfield High School

**Ilaria D'Andrea**, Narragansett High School

**Amy Flynn**, Middletown High School

**Eytan Goldstein**, Barrington High School

**Alex Lavoie**, Coventry High School

**Phoebe Maranjian**, Classical High School

**Elana Sheinkopf**, Barrington High School

**Daniel Sullivan**, Middletown High School

**Kallie Urbach**, Narragansett High School

**Abigail Votta**, North Smithfield High School

## College Interns and Work Study

**Mollie Surprenant**, *Salve Regina University McGinty Fellow* – Fall 2017, *Simmons School of Library & Information Science* – Processed and wrote a finding aid for the Turner, Prout and Yates families papers.

**Sarah Gilcrease** – *Spring 2018 intern, URI* – Assisted with cataloging and repacking costume collection.

**Isabelle Gillibrand** – *Spring 2018 work study, Salve Regina University* – Assisted with various records reorganization projects in the collections department.

**Kerry McAuliffe** – *Spring 2018, Simmons School of Library & Information Science* – Processed and wrote a finding aid for the Miantonomi Memorial Park Commission records.



Fellows cataloging.

## House Markers and House Histories

House Histories: 13

House Markers: 11

The program was suspended 30 June 2018. From 2006 to 2018 a total of 230 orders were filled, including 83 House Markers, which are currently in place throughout Newport.



## Buchanan Burnham Visiting Scholars Program

### VISITING CURATOR:

**John Tschirch**, Visiting Curator of Urban History

### BUCHANAN BURNHAM SUMMER SCHOLARS IN PUBLIC HISTORY CLASS OF 2018:

**Darcy Foster** – BA in history, University of Pittsburgh. Worked with guest curator Rebecca Kelly to research clothing designer and stylist Mollie O'Hara (active 1890s-1930s) and the fashion scene and economy in Newport during the Gilded Age for an exhibit tentatively forecasted to debut summer 2019. Researched McLennan brothers, merchant tailors. Began to compile research on women in Newport involved with social reform and suffrage.

**Margaret Hanson** – MA in Public History and PhD in United States History, University of California Riverside, in progress. BA in American Studies, Brown University, 2014. Contributed scholarship and content to support the William Claggett exhibition, opening December 2018 at the NHS Resource Center. She contextualized Claggett's work in context of the larger community of craftsman active during Newport's Golden Age and period of increased consumerism.

**Devon King** – BA in History, University of Massachusetts Amherst. Researched the development of America's Cup Avenue as an urban development project for a case study for the ongoing *Mapping the Newport Experience* initiative. The *Mapping Newport* website will launch late summer 2018 with its first case study on Washington Square.

**Brittany Fox, Salve Regina University McGinty Fellow** – BA in European History and Theological Studies, Salve Regina University; processed the Whitehorne and Ennis family correspondence and the Margaret Hayden Rector papers on the Belmont family; Newport's Rosie the Riveters: The Hazards and Injustices Endured by Women Working at the Naval Torpedo Station – *A Newport Story*.

### CLASS OF 2017:

**Cameron Boutin** – MA in History, History Department Northeastern University; BS in History and Minors in Criminal Justice and International Affairs, Northeastern University.

**Melissa Drake** – MA in History, through the Public History Program at Northeastern University and her BA in History from Carleton College.

**Katherine Quigley** – MA in History, through the Public History Program at Northeastern University and her BA in History from Carleton College.

**Mollie Surprenant, Salve Regina University McGinty Fellow** – BA in European History and Theological Studies from Salve Regina University.

Roger Williams University public history summer interns, **Kristin Puk** and **Pamela Rochette**



Brittany Fox, Margaret Hanson and Devon King.

# RESEARCH

## Research Topics

Fort Adams Trust

Women of the East Bay

Altantic Slave Trade

Sabbath keeping amongst Protestants and Jews

The Gilded Age and Ward McAllister

Newport fisheries

Hugh Willoughby and the everglades expedition

Economic history of whaling, candles, and spermaceti

Jewish Trade in 17th and 18th century Newport

Whaling trade and the Deblois journals

Newport trade with Cuba

Newport Bridge

Harpers Ferry and John Brown Papers

Black loyalists, Metcalf Bowler, and Major Farchild

James Wady and Rhode Island Furniture

Benjamin Hazard and Trinity Church Taxation

Jane Stuart

Miantonomi Memorial Park and Tower

Newport politics, 1830-1860

18th and 19th century costume

Tea sales in 18th century merchant records

Dorr Rebellion



Newport Historical Society staff researching in collections.



# COLLECTIONS

## Fiscal Year 2017–2018 Accessions

ACCESSION NUMBER	DESCRIPTION	SOURCE
2017.017	Miniature of John Easton, Jr.	Mary (Polly) Lyman
2017.018	Watercolor painting of St. Columba's Church by Mary Ann Bostwick	Jane P. Bouley
2017.019	34 photographs of Newport residences	Claire Ann Demas
2017.020	29 music programs	Carla Francis
2017.021	Wood engraving of Newport Harbor for Harper's Weekly	Purchase
2017.022	Postcard, Ochre Point from Cliffwalk	Alvin Schaut
2017.023	Newport, Rhode Island "America's First Resort" brochure Schedule for The Short Line, Inc., effective Jan, 8, 1967 Schedule for City Bus Routes, effective Feb. 19, 1967 Program for Thames Street Renewal Area	Mary Lyon
2017.024	Receipt for coal shipped from The Old Colony & Newport RR Co. 2 Framed receipts from Town of Richmond	George P. van Duinwyk
2017.025	Photograph of John Maxson House	Peter L. Yeager
2017.026	22 slides from Tall Ships Festival 1976	Kenneth R. Hinga
2017.027	Cobbler's palm Stick pin	Martha Leonard
2017.028	Newport related ephemera including, programs, invitations and ribbons	William A. Gosling
2017.029	Signed Stephen Hopkins order, 1760	Mary Ann Lewis
2017.030	Samuel Vernon silver cup	Leone Brownell Fagan
2017.031	William Ellery Customs House page	Purchase
2017.032	Newport Hospital records, 1873-1904	Newport Hospital
2017.033	10 slides from 1976 Tall Ships Festival	Stratham Historical Society
2017.034	Postcard, 2 letters and photographs from Dawley family	Dorothy Fandacone
2017.035	3 piece silver tea service from Fall River Line	William A. Gosling
2017.036	Coit family bible, family history, Hurricane Carol photographs, ephemera	Tom Whittleton
2017.037	4 hats, 3 hatboxes, 2 dresses owned by Dorrance Hamilton	Matthew Hamilton
2017.038	Photograph of 66th Artillery at Ft. Adams	Cynthia LaRoche
2017.039	3 postcards of Lime Rock Lighthouse	Marion Gagnon
2018.001	Felt-lined alms box and communion service used by Samuel Hopkins	Patricia Davies
2018.002	2 coin silver spoons, set of 4 souvenir spoons, 3 souvenir beer steins, 1 clay jug	Adams Taylor
2018.003	Postcard of bathing scene at Easton's Beach	Cleta Riggins

# COLLECTIONS

## Fiscal Year 2017–2018 Accessions (cont'd)

ACCESSION NUMBER	DESCRIPTION	SOURCE
2018.004	8 postcards of Newport locations	Alvin Schaut
2018.005	Set of silver tongs	Martha Leonard
2018.008	Miss. Alice Brayton scrapbooks	A. Mason
2018.009	Photograph of group of men in front of Colony House	Daniel Titus
2018.010	Newport Natural History Society lease	Richard D'Addario
2018.011	John Clarke Trust records	William Corcoran, on behalf of John Clarke Trust
2018.012	Dorothy Edes scrapbooks, Miss. Newport photographs, Hurricane of 1938 souvenir book	David W. Ludwig
2018.013	Mary Shrieve sampler	NHS Purchase, Eldred's
2018.014	Backstaff	Ron Johnson
2018.015	NDN image archive, Newport tax lists 1940-1960, <i>Newport Mercury</i> woodblock masthead	Edward A Sherman Publishing Co.
2018.016	Newport Seen Archive and website	NHS Purchase, Linda Phillips and Melanie Delman
2018.017	Postcard of Brenton Cove with Ft. Adams in background	Alvin Schaut
2018.018	Sullivan family papers, 1910s-1950s	Frances Connolly
2018.019	Newport Housing Authority photographs	Newport Housing Authority
2018.020	Mary Jenks sampler; Lorna Woodbury sampler	NHS Purchase; Gustave White estate sale
2018.021	2 postcards; Hurricane of 1938, Touro Park	Kim Pinali
2018.022	2 dress coats from Boston Store, 1 luncheon invitation	Norman MacLeod
2018.023	Portrait of Hugh D. Auchincloss, Jr. by Hubert Vos, 1934	Tom Auchincloss
2018.024	Gladding School of Dance Centennial program	Elizabeth Sulock
2018.025	Work receipt, 1749	F. Richard Svelta
2018.026	St. Mary's School Diploma	Carleen DuBlois
2018.027	2 Postcards of Washington Square	Liz Pratt
2018.028	Vernon clothing collection	Shelley Partlon, April Neeble, Terry Partlon
2018.029	Slocum family papers	Sophie Girard



# COLLECTIONS

## Current and Fiscal Year Loans

### BORROWER

Rhode Island State Archives (Charter Museum)  
 National Museum of African American History and Culture  
 Yale University Art Gallery  
 Little Compton Historical Society  
 Little Compton Historical Society  
 Salve Regina University  
 Naval War College Museum  
  
 Gilbert Stuart Birthplace and Museum  
 Herbert and Eileen Bernard Museum of Judaica  
 Preservation Society of Newport County

### OBJECTS

90.1; Painting 01.998; Wallet  
 2005.12; Spirit Bundle  
 16.5.1; Wardrobe  
 Sarah Soule Wilbour Collection  
 34.1.7 B; Chair  
 Wanton-Lyman-Hazard House Archaeological Collection  
  
 1885.1; Painting  
 2007.6; Painting  
 24.1.12; Commemorative Medal  
 65.2.3; Painting  
 78.8; Painting  
 79.3; Painting  
  
 77.2; Painting  
 Aaron Lopez Letter Vol. 667; Account Book  
 MS.2012.4; Invitation



Aquidneck Island Farmerettes during WWI.  
 COLLECTION OF THE NEWPORT HISTORICAL SOCIETY.

# COLLECTIONS

## A Selection of Image Requests from the NHS Collection

The Newport Historical Society's extensive photograph collection is used on a daily basis by a variety of researchers. We assist book publishers, authors, filmmakers, scholars, genealogists, architects, builders and local home-owners in locating rare images of Newport's unique historic landscape and former residents. Below you will find a sampling of how our collection has been utilized, and where images have been published, throughout the 2017-2018 fiscal year.

### PUBLICATIONS

- ♦ *Important American Furniture, Silver, and Folk Art*. Christies, January 2018.  
John Newell lithograph of Newport Harbor  
*Ellen Townsend's Parlor* by Mary Buffum
- ♦ Kelly, Grace. "The Love Story Behind Newport's Wanton-Lyman-Hazard House." *Rhode Island Monthly*, February 2018. Daniel Lyman Sword
- ♦ Grinnell, Nancy W. *Newport Life*. "Thelma Cudlipp Grosvenor" Fall 2017. Photograph of Seabeach
- ♦ DePaola, Gloria (ed. Genie Trevor) *Edible Rhody*, September 2017. Photographs of Bellevue Avenue
- ♦ McNally, Kelly. "Banister's Wharf." *Quest Magazine*. August 2018. Photographs of Banister's Wharf
- ♦ Vislay, Cheryl. "George Washington Topham, post-war mariner in Point District." *Rhode Island Roots*. September 2018. Miniature painting of George Washington Topham
- ♦ Zilian, Fred. "In 1843, slavery was banned in Rhode Island." *Newport Daily News*. May 29, 2018. Potter Family overmantel painting
- ♦ Crane, Elaine F. *The Poison Plot: A Tale of Adultery and Murder in Colonial Newport*. Ithaca: Cornell University Press, 2018.  
Potter Family overmantel painting  
Benedict Arnold Deed and Account Book
- ♦ *Frederick Law Olmsted: Plans and Views of Communities and Private Estates*. Baltimore: Johns Hopkins University Press, expected 2019. Photographs of Lily Pond, Rough Point, and Indian Springs
- ♦ May, Rachel. *An American Quilt: Unfolding a Story of Family and Slavery*. New York: Pegasus Books, 2018.  
Potter Family overmantel painting



The Daniel Lyman Sword.



# COLLECTIONS

- ♦ Tichi, Cecelia. *What Would Mrs. Astor Do?: The Essential Guide to the Manners and Mores of the Gilded Age*. New York: Washington Mews Books, 2018.  
Calling Cards
- ♦ *Newport Harbor Guide* 2018.  
Photographs of steamboats  
Torpedo Station
- ♦ King, Robert B, and Charles O. McLean. *The Vanderbilt Homes*. New York: Rizzoli, expected 2019.  
Photographs of the Chinese Tea House at Marble House and Ochre Point
- ♦ DuBois, Ellen C. *Through Women's Eyes: An American History with Documents*. Boston: Bedford/St.Martin's Macmillan Learning, 2018.  
Potter Family overmantel painting
- ♦ Ricci, James M, and former G. L. Chafee. *The Newport Bridge*. Chicago: Arcadia Publishing Inc, 2018.  
Photographs of Newport Bridge

## EXHIBITION

- ♦ NRF, "To Preserve and Restore: NRF at 50"  
April 5 – November 11, 2018.  
Photographs of Bridge Street and Thames Street
- ♦ PSNC, "Bohemian Beauty: The Aesthetic Movement and Oscar Wilde's Newport" 3/24/2018-11/4/2018.  
Oscar Wilde invitation

## FILM

- ♦ *The Gilded Age*, Sarah Colt Productions with WGBH Boston. Photograph of the Breakers and a regatta
- ♦ *The Swamp*, PBS American Experience, January 2019.  
Willoughby photographs, Seminoles and Miami Bay

## INTERACTIVE EXHIBITION

- ♦ Museum of the American Revolution, Tavern table digital interactive.  
Potter Family overmantel painting
- ♦ Rhode Island Fisheries interpretive signage, "Eating with the ecosystem"  
Photographs of the Mack Fishing Company



Photograph of USS *Intrepid* travelling under the Newport Bridge. JOHN T. HOPF COLLECTION

## Library Accessions 2016/17

2017-18-1 **African Union Society Records, Newport, Rhode Island 1787-1797.** Facsimile of the original record book in the collection of the Newport Historical Society #1674B. Scanned, printed and bound in leather by James Currier, October 2017.

2017-19-1 **The Mayflower: The Families, The Voyage, and the Founding of America** by Rebecca Fraser (NY: St. Martin's Press 2017). Gift of the author, autographed, guest lecturer 11/8/17.

2017-20-2 **"Preparations for the Defense of Rhode Island 1755"** by John B. Hattendorf. The Society of Colonial Wars in the State of Rhode Island and Providence Plantations Publication # 73 (2017). \* NHS research. 2 copies. Gift of the Society of Colonial Wars.

2017-21-1 **Roster: Society of the Cincinnati 2013.** Gift of Henry L. P. Beckwith.

2017-22-1 **A Court Martial Held at Newport, Rhode Island, in August and September 1676, for The Trial of Indians, Charged with being Engaged in King Philip's War by Anonymous.** Facsimile monograph (1858) reprint from Harvard Law School Library. (Making of Modern Law Print Editions).

2018-1-1 **"Exeter Town Council Records 1742/3-1771"** *Rhode Island Roots* Special Bonus Issue, April 2018. Rhode Island Genealogical Society.

2018-2-1 **Spies in Revolutionary Rhode Island** by Christian McBurney (History Press 2014) Autographed. Gift of the author.

2018-3-1 **William and Mary Dyer: Quaker Light and Puritan Ambition in Early New England** by Johan Winsser (North Charleston, SC: CreateSpace 2017). \*NHS research. Gift of author.

2018-4-1 **The Poison Plot: A Tale of Adultery and Murder in Colonial Newport** by Elaine Forman Crane (Cornell University Press 2018) \*NHS research, graphics, guest speaker. Gift of author.



Lt. Col. Cornelius "Neily" Vanderbilt III, Inspector General, Headquarter, New York National Guard with his daughter Grace Vanderbilt and son Private Cornelius "Neil" Vanderbilt IV, US Army at Bailey's Beach, Newport, 1916.  
COLLECTION OF THE NEWPORT HISTORICAL SOCIETY

2018-5-1 **Love of Freedom: Black Women in Colonial and Revolutionary New England** by Catherine Adams and Elizabeth Pleck (Oxford Univ. Press 2010)

2018-6-1 **Mahogany: The Costs of Luxury in Early America** by Jennifer L. Anderson (Harvard University Press 2012) \*NHS research, Guest Speaker.

2018-7-1 **Pictures and Windows: The Paintings of Christopher W. Benson from 1977 to 2017.** (Newport Art Museum: The Fisher Press 2017) Exhibit catalog, Newport Art Museum 2017-2018. Gift of B. Lippincott III.

2018-8-1 **The Palatine Wreck: The Legend of the New England Ghost Ship** by Jill Farinelli (University Press of New England 2017) [Block Island shipwreck 1738]. \*NHS Guest speaker.

2018-9-1 **African American Historic Burial Grounds and Gravesites of New England** by Glenn A. Knoblock (McFarland & Co. 2016) \*NHS Guest Speaker.



# MEDIA

During the 2017-2018 fiscal year, the Newport Historical Society received regional and national media coverage. Much of this publicity was obtained through print publications such as newspapers and magazines, but increasingly we receive attention through regional and niche topic bloggers.

## NEWPORT HISTORICAL SOCIETY:

*ASSLH History News: The Magazine of the American Association for State and Local History*

AtlasObscura.com

Newport County Chamber of Commerce Membership Directory

Newport County Chamber of Commerce Expo 2018, a supplement to the *Newport Daily News*

*Newport Harbor Guide*

NewportNow.com

NewportRI.com/NewportLifeMagazine

*Newport This Week*

*Rhode Island Monthly*

*Sons of the Revolution*

TheNewportBuzz.com

*The Newport Daily News*

What'sUpNewp.com

## THE NEWPORT SHOW:

*Antiques and Fine Arts Magazine*

Delaware Antiques Show Catalogue

*Hey Rhody Home Issue*

*Newport Harbor Guide*

Newport Polo Catalogue

RI.com

The Main Line Antiques Show Catalogue

*The Newport Daily News*

The Newport Music Festival

The Philadelphia Antiques and Arts Show Catalogue

*The Providence Journal*

Winter Antiques Show Catalogue

*Your AAA*



Living historians at the Colonial Career Fair at the Colony House.

# DONORS & MEMBERSHIP

## ANNUAL FUND 2017-18

Peter Antonopoulos	Ms. Marilyn D. Curtis	Mr. Robert Hassard, Treasurer General	Mr. and Mrs. Michael Mariner
Mrs. Virginia Arnold	Mrs. Catherine Milinaire Cushing	Mr. Patrick O'N. Hayes, Jr.	Mr. and Mrs. Stephen S. Marino
Jeffrey and Elizabeth Atkins	Mr. Howard G. Cushing	Mr. and Mrs. Robert Healey	Mr. Philip C. Marshall
J Lorraine Babcock	Mr. and Mrs. Angus Davis	Mr. and Mrs. George G. Herrick	Mr. and Mrs. Holt Massey
Mr. and Mrs. John Bagwill, Jr.	Ms. Deborah Del Nero	Mr. and Mrs. James R. Hogg	Elizabeth Mauran
Ms. Marianna Baker	Mr. and Mrs. Vincent DiBona	Hope Foundation	Mr. Christian M. McBurney
Mr. and Mrs. Richard and Barbara Lloyd Baker	Mrs. Lilly Dick	Ms. Joanne Hovey	Rdml. and Mrs. Dennis McCoy
Mr. Lockett Ford Ballard, Jr.	Mr. and Mrs. David Donatelli	Mr. and Mrs. Ernest Jacquet	Scott McInerney
Daniele and Helen Barbi	Mr. William L. Douglas, Jr.	Mr. and Mrs. Stanley B. Jaffe	The Honorable Juliette C. McLennan
Kimberly Baron	Patricia A. Drislane	Ms. Mary M. Jennings	Mr. and Mrs. Earl McMillen III
Ms. Roberta Barr	Mr. and Mrs. Stephen P. Duffy	Mrs. Victoria Johnson	Mr. Arthur C. Mead and Ms. Linda Walters
Mrs. Christa J. Beneke	Mr. Bartlett Dunbar and Ms. Lisa Lewis	Ms. Charlotte Johnson	Mr. and Mrs. Rufus Meadows
Ms. Barbara Benson	Mr. Thomas Eberhardt	Mr. Daniel W. Jones, Jr.	Mr. and Mrs. Joseph F. Mele
Allen C. Benson	Mr. Howard Eisenberg	Colin Kane	Ms. Tracey Mencia
Mr. and Mrs. Theodore A. Bierwirth	Harry and Donna Elkin	Lewis and Trudy Keen	Ms. Pauline C. Metcalf
Julia Blackburn	Mr. and Mrs. Jon Epstein	Pamela Kelley	Mr. Paul F. Miller and Mr. Charles J. Burns, Jr.
Mr. and Mrs. Dickson G. Boenning	Mr. and Mrs. Robert B. Evans	Ms. Susan Kieronski	Ms. Stacie E. Mills
Mrs. Anne Wister G. Boenning	Maia Farish	Mr. David Kilroy	Mr. and Mrs. Arthur C. Milot
Mr. Richard and Mrs. Barbara Bohan	Mr. and Mrs. James Farrar	Mr. Jack King	Mrs. Kirtley S. Mitchell
David Booth and Jane Garnett	Mohamad and Doriene Farzan	Mr. and Mrs. Roger H. King, Jr.	Mr. Russell Morin
Mr. and Mrs. Pelham Boyer	Mr. and Mrs. Tylor Field II	Elena Kissel	Ms. Suzy Murphy
Mr. and Mrs. Richard L. Brickley, Jr.	Mr. and Mrs. Andrew Fisher IV	Mr. and Mrs. James Klau	Dr. and Mrs. Michael Murphy
John and Winnie Broughan	Johannes Floe and Lonnie Sousa	Mr. Scott Langford	Mr. Finbarr Murray
Rdml. David C. Brown	Mr. and Mrs. David B. Ford	William and Elizabeth Leatherman	Margaret Armstrong Murray
Captain and Mrs. Roger L. Buck	Bob Galkin	Marguerite and Gerry Lenfest	Mr. Douglas L. Newhouse and Dr. Holly M. Bannister
Mr. and Mrs. Richard I. Burnham	Peter and Melinda Gerard	Ms. Dora Present Lewin	Mr. and Mrs. J. Timothy O'Reilly
Mr. and Mrs. James Burress	Bob Gett	Mr. and Mrs. Stephen Lewinstein	Ms. Patricia O'Sullivan
Mr. George C. Burwell	Dr. and Mrs. Vasant Gideon	Mr. William H. Leys	Mr. Richard S. Palmer
Ms. Denise Campbell	Mr. and Mrs. John K. Gillen	Christina K. West and Paul A. Leys	Mr. and Mrs. Jonathan H. Pardee
Mr. and Mrs. Paul Cardoza	Louis Girard	Mr. and Mrs. Bertram Lippincott III	Stacie Parillo
Dr. Robert A. Carrellas	Mr. and Mrs.	Mrs. James W. Lloyd	Ms. Diana Pearson
Mrs. Letty R. Champion	Thomas P. I. Goddard	Mr. Richard C. Loebs Jr	Mr. and Mrs. Peter A. Pelletier
Mr. and Mrs. R. Miles Chandler	Mr. and Mrs. Sidney S. Gorham III	Mrs. Phyllis Lohrum	Mr. and Mrs. Gennaro Perrotti
Mr. and Mrs. George E. Clark, Jr.	Ms. Susan Grandis	Edward C. Long III and Evelyn Rhodes	Mr. and Mrs. Torre Peterson
Mrs. Paulette Cleveland	Mr. and Mrs. Lloyd P. Griscom, Jr.	Ms. Margaretta M. Lovell	Ms. Lorraine F. Pregonzer
Ms. Kelley Coen, Major Gifts Officer	Mrs. Richard Grosvenor	Capt. Hugh F. and Mrs. Madeline D. Lynch	Diana C. Prince
Mr. Michael R. Corcoran	Ms. Jessica Hagen	Elizabeth R. Lynn	Mr. and Mrs. James A. Purviance
Dr. Elaine and Mr. Stephen Crane	Mr. Charles A. Hambly, Jr.	Hon. and Mrs. Ronald K. Machtley	Mrs. Virginia Quinn
Mr. Richard C. Crisson and Mr. Roderick B. O'Hanley	Mr. & Mrs. S. Matthews V. Hamilton, Jr.	Mr. Stephen J. MacQuarrie	Mr. Burton Quist
Mr. and Mrs. Michael J. Cullen	Martha and Paul Harpin	Mr. Brian Madden	Mr. and Mrs. Douglas Riggs
Mrs. Norey Dotterer Cullen	Marion O. Harris	Robert and Heidi Manice	Mr. and Mrs. Eugene B. Roberts, Jr.
	Edward and Wendy Harvey		Mr. and Mrs. R. Brooke Roberts



Ms. Janet L. Robinson  
 Mr. Mark Robinson  
 Mr. and Mrs. James Roehm  
 Mr. and Mrs. John Rok  
 Casper Roos  
 Mr. and Mrs. Donald O. Ross  
 Ms. Abby Rowe  
 Mrs. Jay R. Schochet  
 Maj. Gen. and Mrs. Stephen Seiter  
 Mrs. Richard B. Sheffield  
 Mr. and Mrs. Jeffrey Siegal  
 Mr. and Mrs. Dwight Sipprelle  
 Mrs. Marjorie Spencer  
 Mr. Jeffrey L. Staats  
 Mrs. Susan Stautberg  
 Mr. and Mrs. Donald Steiner  
 Mr. Robert Storrs  
 Dr. G. Brian Sullivan  
 Mr. and Mrs. Ralph Sweet  
 Ms. Jeanne W. Swiszc  
 Marylou Symonds  
 Gladys Szapary  
 Mr. and Mrs. David B. Tanner  
 Mrs. Anna Templeton-Cotill  
 The 1772 Foundation  
 The Felicia Fund  
 Ms. Jane M. Timken  
 Mrs. Mary Jo Valdes  
 Mrs. John A. van Beuren  
 Mr. Alfred B. Van Liew  
 Alfred Vanliew  
 Mr. and Mrs. Stephen G. W. Walk  
 Mr. Robert S. Walker and  
 Ms. Izabella Tereszczenko  
 Mr. and Mrs. William L. Wallace  
 Mr. Alexander G. Walsh  
 Dr. Eileen Warburton  
 Mr. and Mrs.  
 Barclay H. Warburton IV  
 Mrs. Carol Ward  
 Ms. Judith Webb  
 Mr. Robert J. Weiner Jr  
 Capt. Charles F. Weishar  
 Ms. Linda Welters  
 Mr. Sydney O. Williams  
 Mr. and Mrs. Michael Williamson  
 Mr. Richard Guy Wilson  
 Mr. Kenneth R. Woodcock  
 Mr. and Mrs. Ellicott Wright  
 Mr. and Mrs. Harrison M. Wright  
 Dr. Elizabeth G. Wylie  
 Mrs. Kathleen Yeaton



Guests and Living Historians Tara Hunter and Mark Hilliard dancing to The Lafayette Band's period music at the Third Annual Culinary Adventure. PHOTO: ANDREA HANSEN

Ms. Joan Zuerner  
 Mr. David W. Harris  
 Main Line School Night Association

## THE NEWPORT SHOW

### CHAIR

Mrs. S. Matthews V. Hamilton, Jr.

### HONORARY CO-CHAIRS

Mrs. Robert H. Charles  
 Mrs. John R. Donnell

### PREVIEW PARTY CO-CHAIRS

Norey Dotterer Cullen  
 Mrs. John M. Damgard  
 Mrs. James B. Gubelmann  
 Mrs. Peter D. Kiernan III  
 Mrs. John S. Palmer

### PRESENTING SPONSOR

Citizens Commercial Banking

### GALA PREVIEW PARTY SPONSOR

Franklin & Company,  
 Design Associates

### CONTRIBUTING SPONSORS

*Antiques & Fine Art Magazine*  
 Corrigan Financial  
 Freeman's Auctioneers  
 and Appraisers

### MEDIA SPONSORS

*American Fine Art Magazine*  
*Design New England Magazine*  
*The Magazine Antiques*  
*New England Home Magazine*  
*Newport Daily News*  
 Rhode Island Public Radio

### FOUNDERS

Irene Roosevelt Aitken  
 Mr. A. Leslie Ballard and  
 Mr. and Mrs. Mark D. Hull  
 Dr. Holly Bannister and  
 Mr. Doug Newhouse  
 Marilyn Bardes  
 Mr. and Mrs. Richard I. Burnham  
 Minnie and Jimmy Coleman  
 Kim and Glenn Darden  
 Mr. and Mrs. John Damgard

Mrs. John R. Donnell  
 Jacalyn and Bill Egan  
 Mr. and Mrs. Robert B. Evans  
 Pamela and David B. Ford  
 Bernard S. and Sarah M. Gewirz  
 Mr. and Mrs. Robert M. Grace  
 Laurie & Peter Grauer  
 Mr. and Mrs.  
 S. Matthews V. Hamilton, Jr.  
 Elizabeth and William Kahane  
 Mr. and Mrs. Roger E. Kass  
 Mr. and Mrs.  
 Peter DeLacy Kiernan, III  
 Elizabeth and Bill Leatherman  
 Mr. Peter E. Madden  
 Dr. Shirley Madhere and  
 Edward M. Weil, Jr.  
 The Honorable  
 Juliette C. McLennan  
 Anne Owen  
 Susan and George Petrovas  
 Diana Prince  
 Shelley and Nicholas Schorsch  
 Jeremiah and Lorna Shafir  
 Luise M. Strauss  
 Happy van Beuren  
 Archbold D. and  
 Helene van Beuren  
 Barbara van Beuren  
 Diane B. Wilsey

## THIRD ANNUAL CULINARY ADVENTURE

### CELEBRATING THE 100TH ANNIVERSARY OF THE END OF WORLD WAR I

#### CO-CHAIRS

Susan Jacquet  
Elizabeth Leatherman

#### COMMITTEE

Mr. and Mrs. John W. Brooks, Jr.  
Mr. and Mrs. George E. Clark, Jr.  
Mr. and Mrs. Emlen Drayton  
Ms. Jessica Hagen  
Ms. Jody Kuss  
Ms. Diana Pearson  
Mr. and Mrs. William Wilson

#### HOME FRONT SUPPORTERS

Mr. David Brodsky  
Mr. and Mrs. John W. Brooks, Jr.  
Mr. Richard I. Burnham  
Mr. and Mrs. George E. Clark, Jr.  
Ms. Jessica Hagen  
Mr. and Mrs.  
S. Matthews V. Hamilton, Jr.  
Mr. and Mrs. Michael Kidder  
Ms. Jody Kuss  
Mr. and Mrs. William Leatherman  
The Honorable  
Juliette C. McLennan  
Ms. Diana Pearson  
Mrs. Nancy Parker Wilson

#### SPONSORS

Audrain Automobile Museum  
Dick Shappy of Warwick, RI  
Eighty-Eighth Army Band  
Lafayette Band  
McGrath Clambakes & Catering  
Naval Station Newport -  
Colorguard  
Newport Performing Arts Center  
Point Wine and Spirits

#### DONORS

David Brodsky  
John and Elizabeth Brooks  
Richard I. Burnham  
Mr. and Mrs. George E. Clark  
Patrick Dolat  
Carol J. Epstein  
Toby Field  
Dr. and Mrs. E.G. Fischer  
Ronald Lee Fleming  
David B. Ford  
Bernard S. and Sarah M. Gewirz  
Mr. and Mrs. Peter W. Gonzalez  
Hope Alexander Griscom  
Mr. and Mrs.  
S. Matthews V. Hamilton, Jr.  
George Herrick  
Susan Jacquet  
Mary M Jennings  
Mr. and Mrs. Michael Kidder  
Jody Kuss  
Elizabeth Leatherman  
The Honorable  
Juliette C. McLennan  
Mrs. Diana Pearson  
Patricia and Torre Peterson  
Sue and George Petrovas  
Susanne and John Reid  
Cynthia Sinclair  
Diana and Paul Szapary

## ADDITIONAL DONATIONS

### GRANTS, PROJECT & GENERAL DONATIONS

Anonymous  
Mr. and Mrs. Lyn Comfort  
Dr. Elaine and Mr. Stephen Crane  
Roger F. Giraud, Governor  
Hartfield Foundation  
Mr. and Mrs. George G. Herrick  
Edward W. Kane and  
Martha J. Wallace  
Lewis and Trudy Keen  
William and Elizabeth Leatherman  
Mr. Bruce C. MacGunnigle,  
President  
Mrs. Geraldine Nagle  
Mr. Douglas L. Newhouse and  
Dr. Holly M. Bannister  
Prince Charitable Trusts  
Rhode Island Foundation  
Dr. Verna B. Robinson  
Mr. and Mrs. Peter Siegl  
Mr. and Mrs. Dwight Sipprelle  
Capt. and Mrs. Timothy F. Somes  
State of Rhode Island and  
Providence Plantations  
van Beuren Charitable Foundation

## MEMORIAL GIFTS

### IN MEMORY OF RICHARD GROSVENOR

Mr. Lockett Ford Ballard, Jr.  
Ms. Betsey Deleiris  
Lewis and Trudy Keen  
Elizabeth Leatherman  
Russ and Beth Milham  
Mr. and Mrs. Dennis M. Taber  
Mrs. John A. van Beuren

### IN MEMORY OF JACQUELINE LYDON

Michael and Beth Allen  
Mercy Mount Country Day School  
Mrs. Kirtley S. Mitchell

### IN MEMORY OF SHIRLEY ANNE ROOS

Mr. and Mrs. Donald Gaultz  
Mr. and Mrs. Pieter Roos



Two Army Soldiers played by Jeffrey Meriwether and Matt Zembo with a 1918 car from the Audrain Automobile Museum at the Third Annual Culinary Adventure. PHOTO: ANDREA HANSEN



## CAPITAL CAMPAIGN

The Challenging the Future capital campaign, and the work that this effort funded at NHS, has been an ongoing activity for nearly 7 years. Launched with little fanfare in 2012, the campaign envisioned providing for the comprehensive modernization of the NHS's early 20th century headquarters building and doubling its modest endowment. Both steps involved creating a stable foundation for your Historical Society to enter a new phase of relevancy and useful activity within this community.

As of today:

\$3.35 million was raised and spent for planning, the work of the campaign itself, and the expenses to renovate and equip our updated Resource Center.

\$2.65 million has been raised in pledged and actual donations to the NHS endowment. We have nearly reached our goals!

Recognition signs are starting to salute major donors around the building, with more under preparation. If you would like to help us wrap this up, please call or email Ruth Taylor at: 401-846-0813 or [rtaylor@newporthistory.org](mailto:rtaylor@newporthistory.org).

### CAPITAL CAMPAIGN/ BUCHANAN BURNHAM ENDOWMENT

Anonymous (2)

Helen D. Buchanan Trust

Mr. and Mrs. Richard I. Burnham

Alletta Morris McBean  
Charitable Trust

Mr. and Mrs. Richard and  
Barbara Lloyd Baker

Mr. and Mrs. Dickson G. Boenning

Mr. and Mrs. David Brodsky

Champlin Foundations

Dr. Elaine and Mr. Stephen Crane

Ms. Elizabeth Prince de Ramel

Mr. and Mrs.  
Guillaume H. de Ramel

Mr. and Mrs. Vincent DiBona

Mr. Bartlett S. Dunbar,  
Bowen's Wharf Co.

Mr. and Mrs. Robert B. Evans

Mr. James Farrar,  
Farrar Associates, Inc.

Mohamad and Doriene Farzan  
and NewPort Architecture LLC

Pastor Barr A. Flynn, Newport  
Community Church

Mr. and Mrs. Bernard Gewirz

Mr. and Mrs. Thomas P. I. Goddard

Hamilton Family Foundation

Mr. and Mrs. George G. Herrick

Hope Foundation

Ms. Mary M. Jennings

Mrs. Victoria Johnson

Edward W. Kane and  
Martha J. Wallace

Pamela Kelley

Mrs. Beverly T. Klyberg

William and Elizabeth Leatherman

Mr. and Mrs. Matthew H. Leys

Mrs. James W. Lloyd

Mr. Richard C. Loeb's Jr

Kenneth H. Lyons

Rdml. and Mrs. Dennis McCoy

Mr. Paul McGreevy

The Honorable  
Juliette C. McLennan

Ms. Pauline C. Metcalf

Mr. and Mrs. Charles J. Moore

Mrs. Geraldine Nagle

Mr. Douglas L. Newhouse and  
Dr. Holly M. Bannister

Mr. Richard S. Palmer

Prince Charitable Trusts

Mr. and Mrs. James A. Purviance

Mr. and Mrs. Douglas Riggs

Denise Roberts

John Shufelt

Mr. and Mrs. Dwight Sippelle

Mr. Jeffrey L. Staats, AIA, AICP

Mrs. Luise Strauss

Valet Connection, Inc.

van Beuren Charitable Foundation

VAdm. Thomas R. Weschler

Mrs. Nancy Parker Wilson

Mr. and Mrs. Harrison M. Wright

Mr. Kevin Kelley and  
Ms. Deborah Kelsey

Mr. and Mrs. Peter D. Kiernan III

William and Elizabeth Leatherman

Mr. Peter E. Madden

Mr. and Mrs. James and  
Nancy Madson

Elizabeth Mauran

Mr. Brian McNally

Mr. Paul F. Miller and  
Mr. Charles J. Burns, Jr.

Mr. and Mrs.  
Christopher L. Otorowski

Mr. and Mrs. Torre Peterson

Mr. and Mrs. Frank N. Ray

Mr. and Mrs. David Reed

Mrs. John Reid

Mr. Michael Semenza, V.P.

Mrs. Cynthia Sinclair

Mr. and Mrs. Gary J. Stack

Mr. and Mrs. James Teachout

Mr. and Mrs. Michael Weil

Mr. Sydney O. Williams

## MEMBERS

### 1854 SOCIETY

Melissa Bachochin

Mr. Dayton T. Carr

Ms. Diana Pearson

### BUSINESS

ArtCare Resources LLC

East Bay Community  
Action Program

Empire Tea & Coffee

Harborside Inn

Newport Lamp and Shade

Newport Restoration Foundation

Rhode Island Red Food Tours

### PATRON

Mrs. Russell Barnett Aitken

Mr. and Mrs. Richard and  
Barbara Lloyd Baker

Mr. A. Leslie Ballard

Ms. Barbara van Beuren and  
Mr. Stephen L. Glascock

Mr. and Mrs. Peter Seipp Goltra

Mr. Frank L. Hohmann III

Lewis and Trudy Keen

The Honorable  
Juliette C. McLennan

Mr. and Mrs. John Mendez

Mr. Douglas L. Newhouse and  
Dr. Holly M. Bannister

Mrs. Anne Dale Owen

Mr. and Mrs. George Petrovas

Mrs. Frederick H. Prince

Mrs. Jay R. Schochet

Mr. and Mrs. Nicholas Schorsch

Mr. and Mrs. Jeremiah Shafir

Patrick Shekleton

Mr. William Slivka

Mr. and Mrs.  
Archbold D. van Beuren

Mrs. John A. van Beuren

Mr. and Mrs. Russell V. Vernet

Ms. Diane B. Wilsey

### SPONSOR

Ms. Robbie M. Benjamin

Ms. Barbara Benson

Mr. and Mrs. Richard L. Brickley, Jr.

Mr. and Mrs. Richard I. Burnham

Mr. and Mrs. John Damgard

Mr. and Mrs. Glenn Darden

Mrs. Lilly Dick

Mrs. John R. Donnell

Mr. and Mrs. Robert B. Evans

Maia Farish

Mr. and Mrs. David B. Ford

Mr. and Mrs.

George C. Francisco IV

Mr. and Mrs. Robert M. Grace

Mr. and Mrs. Peter Grauer

Prof. and Mrs. John B. Hattendorf

The Hazel-McEntee Family

Mr. and Mrs. William Kahane

## HOUSEHOLD / FAMILY

Mr. Tim Abbot and  
Ms. Talya Leodari  
J Lorraine Babcock  
Mrs. Maryalice E. Barker  
Mr. and Mrs. Ronald I. Becker  
Mr. and Mrs. Robert Bendesky  
Mr. and Mrs. Theodore A. Bierwirth  
Mr. and Mrs. Steven Boshi  
Mr. and Mrs. Matthew Brenckle  
Mr. and Mrs. Dexter Brooks  
Josephine C. Brown  
Angela Brunetti  
Mr. and Mrs. Patrick T. Burns  
Mrs. Cecile A. Butler  
Mr. Eric S DeLong  
Kimberley Dias  
Mr. and Mrs. Stephen P. Duffy  
Thomas Gabriel  
Mr. and Mrs. Joseph Gallichio  
Dr. Thomas Goss  
C. Morgan Grefe, PhD  
John D. Harris, II  
Mr. and Mrs. Francis E. Hebert, Jr.  
Thomas Hockaday and Bill Martin  
Admiral and Mrs. James Hogg  
Dr. Judith G. Holcomb  
Brian Hubert

Mr. and Mrs. Ernest Jacquet  
Ms. Ariel Johnson  
Dan Lacroix  
Mr. and Mrs. James Lanzillo  
Mr. David Lavery  
James M Ludes, Ph.D.  
Mr. Stephen C. Maxson  
Micheline McClennen  
Mr. and Mrs. Matthew Mees  
Mr. Asa Eric Montgomery  
Bernard and Doris Nemtzow  
Michael Hunter Phelps  
Mr. and Mrs. Michael Powers  
Mr. Burton Quist  
Anthony Randazzo  
Mr. James M. Ricci  
Mr. and Mrs. Joseph Roxe  
Ms. Lorraine Scripture and  
Mr. Sean O'Brien  
Mr. and Mrs. Peter Siegl  
Mr. and Mrs. Ken Smith  
Mrs. Susan Stautberg  
Jason Steinhauer  
Ms. Elizabeth Stevens and  
Mr. Norman MacLeod  
Mr. and Mrs. Joseph F. Sullivan  
Ms. Elizabeth Sulock  
Ms. Jeanne W. Swiszc  
Mr. and Mrs. David B. Tanner

Ruth and Adams Taylor  
Andrew Teixeira  
Mr. and Mrs. Douglas Thornton  
Dr. Eileen Warburton  
Mr. Robert J. Weiner Jr

## ISLANDER HOUSEHOLD

Christina and Robert Agnew  
Mr. and Mrs. John Bagwill, Jr.  
Ms. Margaret Baker  
Mr. and Mrs. Robert Barlow  
Mr. and Mrs. Peter Baylor  
Ms. Akeia Benard  
Rick Best and Susan Taylor  
Peter and Gretchen Bloom  
Mr. and Mrs. Pelham Boyer  
John and Winnie Broughan  
Captain and Mrs. Louis A. Burns  
Mr. and Mrs. William Caine  
Mr. and Mrs. Paul Cardoza  
Mr. Richard C. Crisson and  
Mr. Roderick B. O'Hanley  
Ms. Betty Ann Czech  
Mr. and Mrs. Peter Damon  
Mr. and Mrs. Paul Debrule  
Mr. Dennis Dougherty and  
Ms. Liza Faerber

Mr. and Mrs. William A. Durgin  
Ronald H. and Theresa A. DuVall  
Mr. Jonathan Edwards  
Harry and Donna Elkin  
T.W. Emmett and A.L. Garrison  
Mr. and Mrs. Mohamad Farzan  
Mr. and Mrs. Everett Federici  
Mr. and Mrs. John H. Flynn, Jr.  
Mr. and Mrs. Bruce Foulke  
Mr. Charles E. Gardner and  
Ms. Alice B. Bridge  
Mr. and Mrs. James E. Garman  
Col. and Mrs. Theodore L. Gatchel  
Dr. and Mrs. Vasant Gideon  
Mr. Timothy Gill  
Ms. Lynne Glickman and  
Mr. Mark Kanter  
L. Neill and Leslie J. Gray  
The Rev. and Mrs.  
Everett H. Greene  
Ms. Sarah L. Gretzky  
Mr. and Mrs. Rick Grosvenor  
Mr. Wayne C. Hamilton  
Mr. and Mrs. Daniel F. Harrington  
Mr. and Mrs. Robert Healey  
Mr. and Mrs. George Hill  
Mr. and Mrs. Charles W. Jauss  
Ms. Mary M. Jennings  
Mr. and Mrs. Randolph Johnson  
Mrs. Victoria Johnson  
Mr. and Mrs. David Krupa  
Mr. and Mrs. Reynold Larsen  
Ms. Cindy Lasser and  
Mr. Paul Svenovick  
Mr. Jay Leno  
Mr. and Mrs. Donald Magee  
Mr. and Mrs. Stephen S. Marino  
Ms. Candace L. Martin  
Mr. and Mrs. Thomas Maxwell  
Rdml. and Mrs. Dennis McCoy  
Matt and Terry McEntee  
Ms. Patricia McGrath  
Mr. and Mrs. Rufus Meadows  
Mr. Edward Morgan  
Mr. and Mrs. Michael Muessel  
Dr. and Mrs. Michael Murphy  
Howard and Mary Newman  
Karen Oakley  
Mr. and Mrs. Ralph Plumb  
Mr. and Mrs. R. Brooke Roberts  
Peter Robey  
Mr. and Mrs. John Rok  
Mr. and Mrs. Timothy Ryan  
Mr. & Mrs. Craig S. Sampson



Aquidneck Island Farmerettes working on Voight's farm, WWI.  
COLLECTION OF THE NEWPORT HISTORICAL SOCIETY



Mr. and Mrs. Albert K. Sherman, Jr.  
 Mr. and Mrs. John Michael Skaggs  
 Mr. Ken Snyder  
 Mr. Keith Stavelly and  
 Ms. Kathleen Fitzgerald  
 Ms. Jeanne W. Swiszc  
 Ms. Diana Sylvaria and  
 Mr. Paul L. Szapary  
 Mr. Seth Welton and  
 Ms. Jenna Teachout  
 Rick Ursch  
 Ms. Judith Webb  
 Mr. and Mrs. David Wixted

## INDIVIDUAL

Ms. Lucille Acrish  
 Mr. and Mrs. Richard P. Adams  
 Mr. Brandon Aglio  
 Ms. Catherine White Almeida  
 Tracy Anthony  
 Mrs. Florence G. Archambault  
 Chris Arner  
 Mrs. Virginia Arnold  
 Ms. Ann E. Arnold  
 Mr. Matt Baird  
 Dorothy S Baker  
 Mr. Lockett Ford Ballard, Jr.  
 Mrs. Cherry Fletcher Bamberg and  
 Mr. Paul G. Bamberg  
 Ms. Estelle Barada  
 Mr. James Barr  
 Anne Benson  
 Sandra Bidlack  
 Joan Bishop  
 Ms. Patricia A. Blakeley  
 Mr. Scott Bliss  
 Mr. David E. Boenning  
 Mrs. Anne Wister G. Boenning  
 Mrs. Joan Thompson Boghossian  
 Ms. Laurie Bradley  
 Mr. John F. Brady  
 Mr. Edward Brassard  
 Mr. Dennis Bristow  
 Mr. Paul F. Brueggemann  
 Ms. Mary Brunell  
 Mrs. Marilyn Bunnewith  
 Mr. and Mrs. Timothy J. Burns  
 Mr. and Mrs. James Burress  
 Sara A. Butler  
 Mr. James C. Buttrick  
 Mrs. Mary-Lou Bynum  
 Mrs. Patricia A. Cassidy  
 Ms. Elizabeth Cazden  
 Mrs. Letty R. Champion

Ms. Evelyn M. Cherpak  
 Ms. Mary Clair  
 Mrs. Paulette Cleveland  
 W. Shelby Coates, Esq.  
 Ms. Kelley Coen,  
 Major Gifts Officer  
 Mr. and Mrs. Neill F. Coffey  
 Mrs. Elizabeth Grason Cohen  
 Mr. Garrick B. Connelly  
 Ms. Mary Elizabeth Corrigan  
 Mr. and Mrs. Michael R. Cottrell  
 Dr. Elaine and Mr. Stephen Crane  
 Ms. Susan F. Daly  
 Ms. Linda Deasley  
 Ms. Karen Deibert  
 Ms. Mercedes Deines  
 Ms. Mary Jo Dieckhaus  
 Mr. Tom Dietzel  
 Mr. William L. Douglas, Jr.  
 Ms. Joyce Douglas  
 Mrs. Alexandra Driscoll  
 Patricia A. Drislane  
 Mrs. Jane H. Dwyer  
 Ms. Karen Estes  
 Ms. J. Brandon Wilson Evitt  
 Mr. Peter Fay  
 Ms. Brenda M. Finn  
 Chuck and Karen Flippo  
 Mr. and Mrs. Michael Franco  
 Ms. Joan C. Frank  
 Mr. Thomas F. Freeman  
 Mrs. Michele Gabrielson  
 Mr. Peter Garcia  
 Mr. Terrence Gavan  
 Mr. Robert L. Gilbert  
 Mrs. Frieda Weaver Gockel  
 Mr. and Mrs. Sidney S. Gorham III  
 Ms. Christine Gorham  
 Kathy Gozdur  
 Mr. Bruce A. Gray  
 Mr. Gary Gregory  
 Ms. Nancy Whipple Grinnell  
 Ms. Margot Gschossmann  
 Ms. Jessica Hagen  
 Mr. Don N. Hagist  
 Mr. Charles A. Hambly, Jr.  
 Martha and Paul Harpin  
 Martha Henebry  
 Mr. and Mrs. John K. Hirschboeck  
 Ms. Ruth Hodges  
 Mr. Jim Hollister  
 Ms. Robin L. Hopkins  
 Matthew and Emily Hughes  
 Ms. Frankie Hutton

Susan Jutcawitz  
 Sharon Kania  
 Mr. Bruce Kappel  
 Jill and George Kassiss  
 Linda L. Kauffman  
 Ms. Winifred P. Kelley  
 Ms. Elizabeth Kennedy  
 Thomas Kennedy  
 Mr. David Kerins  
 Ms. Susan Kieronski  
 Mr. David Kilroy  
 Mr. and Mrs. Don King  
 Ms. Susan K. King  
 Ms. Vicki T. King  
 Mr. Patrick G. Kirby  
 Mr. Richard H. Koziara  
 Peter Lance  
 Mr. Scott Langford  
 Ms. Joan Laxson  
 Mr. Timothy Lehnert  
 Mr. William H. Leys  
 Mr. and Mrs. Bertram Lippincott III  
 Mrs. Sarah Littlefield  
 Mr. Richard C. Loebs Jr  
 Mrs. Phyllis Lohrum  
 Mr. Andrew Long  
 Sarah Long  
 Mary C. Madden  
 Mrs. Susan D. Maden  
 Mr. Alfred Martin  
 Mr. Josh Mason  
 Mr. William J. McAtee  
 Mrs. Charles F. McCaffrey  
 Mr. and Mrs. John H. McCain  
 Ms. Sarah J. McDonough  
 Mr. Paul McGreevy  
 Mr. Bruce D. McLean  
 Ms. Tracey Mencion  
 Ann Gross Underwood Meredith  
 Professor JL Meriwether  
 Ms. Pauline C. Metcalf  
 Ryan Meyer  
 Chas A. Miller, III  
 Ms. Jane S. Miner  
 Mr. William E. Mullins  
 Ms. Barbara Bye Murdock  
 Arthur W. Murphy  
 Mr. Finbarr Murray  
 Michele G. Musselman  
 Thomas Muzza  
 Mrs. Geraldine Nagle  
 Charles P. Neimeyer  
 Mr. Sanford Neuschatz  
 Mrs. Bridget Newton

Mr. Daniel J. Oakley  
 Mrs. Karin Oatley  
 Eileen O'Brien  
 Ms. Ellen C. O'Brien  
 Mr. William C. O'Connell  
 Mr. Michael A. Pare  
 Molly Bruce Patterson  
 Mr. John M. Peixinho  
 Mr. Christopher T. H. Pell  
 Mr. and Mrs. Jason Peters  
 Ms. Elise Petrarca  
 Timothy Phelps  
 Ms. Alison Phillips  
 Mrs. Alberta T. Picozzi  
 Ms. Lorraine F. Pregonzer  
 Mr. Kenneth Proudfoot  
 Mr. John F. Quinn  
 Ms. Jean Quinn  
 Mrs. Alicia Quirk  
 Mr. Peter Rameé  
 Diane Ray  
 Jeffrey Richard  
 Michael Robey  
 Ms. Michelle Roche  
 Ms. Anita Royer  
 Mr. Kevin Ryan  
 Drs. Rhonda and Naftali Sabo  
 Ms. Joanna Salvo  
 Ms. Sally Anne Santos  
 Mr. David Schultz  
 Turner C. Scott, Esq.  
 Ms. Karen Seabury  
 Mr. Arthur Shattuck  
 Mrs. Richard B. Sheffield  
 Christina Sherman  
 Ms. Kathleen D. Shinnars  
 Mr. James M. Silvia  
 Mrs. Susan Small  
 Mr. Gregory A. Smith  
 Mrs. Mary Beth Smith  
 Mr. William H. F. Spencer  
 Mrs. Katherine Stack  
 Mr. Mark Stenning  
 Ms. Chelsea Stewart  
 Ms. Lisa Stiles  
 Mrs. Meléna Streitman  
 Mr. Harold Stuart  
 Ms. Audrey Stuck-Girard  
 Mr. and Mrs. Roger J. Sullivan  
 Mr. Frank Sullivan  
 Mr. Grant W. Sullivan, Jr.  
 Mr. Jerome H. Sullivan  
 Elizabeth Barry Sweet  
 Pamela Swiatek

Mr. and Mrs. Dennis M. Taber  
 Ms. Heidi Taylor  
 Mrs. Anna Templeton-Cotill  
 Mr. Gregory Theberge  
 Mrs. Janet M. Thorngate  
 Mr. John C. Thresher  
 Mr. Wayne G. Tillinghast  
 Mr. Carl Tiska  
 Ms. Johanna Tower  
 Mr. Christopher Townsend  
 Mr. John Tschirch  
 Ms. Ellen Tuttle  
 Mr. Robert S. Walker and  
 Ms. Izabella Tereszczenko  
 Jeffrey and Renee Tuttle  
 Mr. Alexander G. Walsh  
 Mrs. Jane MacLeod Walsh  
 Mr. Gerald W. R. Ward  
 Mr. and Mrs. F. Bruce Westgate  
 Mr. Phillip Wilson  
 Ms. Marsha Wilson  
 Robert Wilson  
 Amy Winsor  
 Herbert Wosencroft  
 Mr. Michael S. Wyzga  
 Mrs. Kathleen Yeaton  
 Candace Zeman  
 Dr. Fred Zilian  
 Dr. Catherine W. Zipf and  
 Mr. Mark Courtney  
 Francis Zumbrun

## LIBRARY / MUSEUM

Allen County Public Library  
 American Antiquarian Society  
 Boston Public Library  
 Community College of RI  
 Cornell University Library  
 Dallas Public Library  
 Library of Boston Athenaeum  
 Middletown Public Library  
 Museum of Newport Irish History  
 Newport Public Library  
 Phillips Memorial Library  
 Redwood Library & Athenaeum  
 Rockefeller Library  
 Serials Department  
 Roger Williams University Library  
 Salve Regina University Library  
 St. George's School  
 The DAR Library  
 Winterthur Museum and Library  
 Wisconsin Historical Society



Living historians interacting with the attendees of the Fifth Annual Living History event  
*Life During the 1778 Battle of Rhode Island.* PHOTO: CAROLINE GODDARD

## LIFETIME

Mr. and Mrs. Larry Allen  
 Mr. Henry H. Anderson, Jr.  
 Ms. Mary K. Baumgartner  
 Dr. Joseph Blumen  
 Mr. and Mrs. Robert Butler  
 Mr. James F. Carlin, Jr.  
 Mrs. Ralph E. Carpenter  
 Mr. David W. Chase  
 Mr. and Mrs. James J. Coleman, Jr.  
 Mrs. William Cooper  
 Mr. Jack Cory  
 Mrs. Catherine Milinaire Cushing  
 Mr. William J. Donovan, Jr.  
 Mr. and Mrs. William P. Egan  
 Dr. and Mrs. Edwin G. Fischer  
 Mrs. John W. Fiske  
 Mr. Ronald Lee Fleming  
 Ms. Faith Underhill Fogle  
 Mrs. George E. Ford  
 Mr. Henry Foster  
 Mr. and Mrs. Bernard Gewirz  
 Mr. Robert G. Goelet  
 Mr. and Mrs. John E. Hall  
 Mr. & Mrs. S. Matthews V. Hamilton, Jr.  
 Marion O. Harris  
 Mr. and Mrs. George G. Herrick  
 Mrs. Audrey R. Hopf  
 Mr. and Mrs. Stanley B. Jaffe  
 Mrs. Donald Wiles James, Jr.  
 Mr. Peter Jefferys  
 Mr. Eugene LaParle, Jr.

Mr. and Mrs. John G. Laramée  
 Ms. Marie Lederer  
 Mr. James W. Lees  
 Kenneth H. Lyons  
 Ms. Laura Manchester Smith  
 William T. McCue, Jr.  
 Ms. Elizabeth E. Meyer  
 Mr. Craig J. Millard  
 Mr. and Mrs. Arthur C. Milot  
 Mrs. Ruth Orthwein  
 Mrs. Nancy W. Pendleton  
 Mr. and Mrs. Andrew Radel  
 Mrs. Margaret Rhodes  
 Mr. Richard Robinson  
 Mrs. John Newbold Robinson  
 Mr. Harry A. Schult  
 Mrs. Paul Scura  
 Mr. James V. Serzan  
 Mr. Alfred R. Simson  
 Ms. Sally Alice Smith  
 Mrs. Marjorie Spencer  
 Mr. Lewis T. Steadman  
 Mrs. Luise Strauss  
 Mrs. Mary Jo Valdes  
 Mr. and Mrs. William M. Vareika  
 Capt. & Mrs. G. L. Voegeli  
 Mrs. Gloria Winston  
 Ms. Stacey E. Wolf  
 Mr. and Mrs. Ellicott Wright  
 Mr. and Mrs. Harrison M. Wright  
 Mrs. James Wright  
 Mr. G. Richard Young

## SCHOLAR

Mr. Michael Arsenault  
 Allen C. Benson  
 Mrs. Joan Caffrey  
 Mr. Brad Carter  
 Jerry Dauterive  
 Christine Delucia  
 Mr. Norman Desmarais  
 Mr. Otis Edwards  
 Mrs. Karen Gray  
 Dr. Christine Haverington  
 Jane Lancaster  
 Mr. William P. Leeman  
 Dr. Richard Morgera  
 LCDR and Mrs. Ian Nesbitt  
 Dr. John J. Parrillo  
 Mark-Phillip Pebworth  
 Ms. Roberta Stevens, Director  
 Mr. Richard C. Rohrs  
 Bradly Vanderstad  
 Prof. Michael J. White



## 21ST CENTURY FUND

The 21st Century Fund represents the highest level of support for the Newport Historical Society. These individuals and organizations are helping to create an active and vital new century for Newport's history. The categories represent cumulative giving in the 21st century.

### \$1,000,000 AND UP

Alletta Morris McBean Foundation  
Helen D. Buchanan and the Helen D. Buchanan Trust  
van Beuren Charitable Foundation

### \$250,000—\$999,000

Mr. and Mrs. Richard I. Burnham  
The Champlin Foundations  
Mrs. Samuel M.V. Hamilton and the Hamilton Family Foundation  
Edward W. Kane and Martha J. Wallace Foundation  
Prince Charitable Trusts  
Mr. and Mrs. William Leatherman and the Firestone Foundation  
Mr. and Mrs. Dwight Sipprelle

### \$50,000—\$250,000

Anonymous  
Mr. Hugh D. Auchincloss, III  
Mr. and Mrs. A. Leslie Ballard  
Ms. Elizabeth Prince de Ramel  
Mr. and Mrs. Robert Evans  
Mr. and Mrs. David B. Ford  
Mr. and Mrs. S. Matthews V. Hamilton, Jr.  
Mr. Douglas L. Newhouse and Dr. Holly M. Bannister  
Rhode Island Foundation  
Rhode Island Historic Preservation and Heritage Commission  
Mr. and Mrs. Nicholas Schorsch  
State of Rhode Island and the Providence Plantations  
Mrs. Luise Strauss  
Mr. and Mrs. Harrison M. Wright  
Mrs. John A. van Beuren

Giving to all funds, including membership, counts for recognition in the 21st Century Fund. Donations to the Newport Show are included if a qualifying donation has also been made directly to the Newport Historical Society.

# FINANCIAL STATEMENTS

## 18 MONTH STATEMENT (UNAUDITED) JULY 2016 – DECEMBER 2017

### INCOME

#### 4 - REVENUE

4000	Academic Services .....	18,084.05
4010	Admissions .....	34,861.05
4020	Sales - Store .....	271,302.75
4021	Sales - Internet .....	32,191.48
4040	Fundraising/Special Events .....	299,266.68
4050	Tour Fees .....	80,054.44
4060	Membership .....	50,781.40
4070	Property Rental .....	44,000.00
4090	Endowment Distribution .....	208,000.00
4091	Mellon Distribution .....	30,000.00
	REVENUE OTHER .....	<u>125.00</u>
	TOTAL 4 REVENUE .....	<b>743,500</b>

#### 5 - SUPPORT

5000	Donations .....	472,364.57
5100	Grants .....	163,901.25
	TOTAL 2- SUPPORT .....	<b>636,265.82</b>

TOTAL INCOME ..... **1,704,932.67**

#### COST OF GOODS SOLD

6000	COGS .....	178,055.40
	TOTAL COGS .....	<b>178,055.40</b>

GROSS PROFIT ..... **1,526,877.27**

### EXPENSE

#### 7 - PROGRAM

TOTAL 7 - PROGRAM ..... **138,372.18**

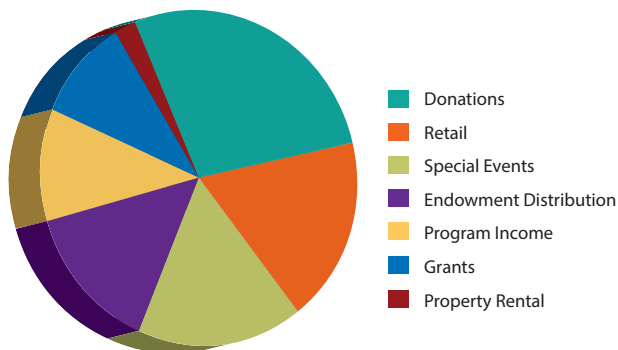
#### 8 - SUPPORTING SERVICES

8000	Operations .....	241,642.74
8100	Personnel .....	990,579.61
8200	Maintenance .....	72,608.99
8500	Dues & Subscriptions .....	2,048.00
8800	Miscellaneous Expense .....	3,014.12
8900	Professional Development .....	5,528.71
8950	Professional Services .....	<u>37,923.79</u>
	TOTAL 8 - SUPPORTING SERVICES .....	<b>1,353,345.96</b>

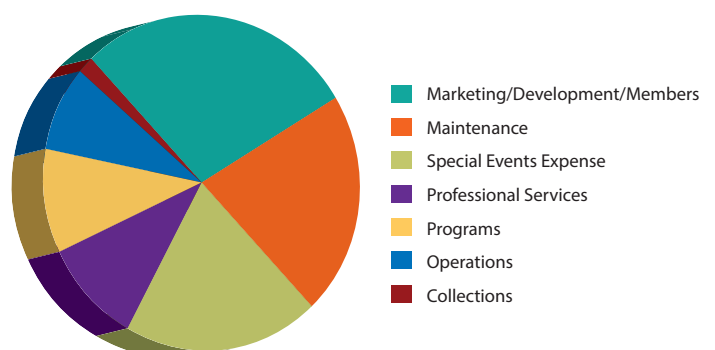
TOTAL EXPENSE ..... **1,491,718.14**

NET INCOME ..... **35,159.13**

### Gross Income



### Non-Personel Expenditures





# FINANCIAL STATEMENTS

## BUDGET 2018

### INCOME

#### 1 - REVENUE

4000	Academic Services .....	12,000
4005	Royalties .....	1,000
4010	Admissions .....	20,000
4020	Sales - Store .....	180,000
4021	Sales - Internet .....	25,000
4040	Fundraising/Special Events .....	160,000
4050	Program/Tour Fees .....	45,000
4060	Membership .....	40,000
4070	Property Rental .....	40,000
4090	Endowment Distribution .....	180,000
4091	Mellon Distribution .....	20,000
4200	Other Income .....	15,000
	<b>TOTAL 1 REVENUE .....</b>	<b>738,000</b>

#### 2 - SUPPORT

5000	Donations .....	150,000
5100	Grants .....	150,000
5210	Annual Fund .....	150,000
	<b>TOTAL 2- SUPPORT .....</b>	<b>450,000</b>

**TOTAL INCOME .....** **1,188,000**

6000 Cost of Goods Sold .....

92,000

**GROSS PROFIT .....** **1,096,000**

### EXPENSE

#### 3 - PROGRAM

7000	Marketing/Development/Members .....	55,000
7100	Collections .....	14,000
7200	Programs .....	25,000
7300	Special Events .....	50,000
	<b>TOTAL 3 - PROGRAM .....</b>	<b>144,000</b>

#### 4 - SUPPORTING SERVICES

##### 8000 Operations

8002	Equipment Rental/Maintenance .....	8,500
8003	Fees, Licenses & Permits .....	2,000
8004	Information Technology .....	15,000
8005	Insurance .....	40,000
8006	Interest Expense .....	4,000
8007	Meals & Entertainment .....	3,500
8008	Merchant Service Fees .....	9,000
8009	Office Supplies .....	5,000
8010	Postage & Delivery .....	5,000
8011	Printing .....	11,000
8013	Security .....	6,000
8014	Telephone .....	7,200
8015	Travel .....	5,000
8016	Utilities .....	33,000

**TOTAL OPERATIONS .....** **152,450**

##### 8100 Personnel

8101	Gross Wages .....	594,000
8103	Payroll Taxes - Employer .....	54,000
8104	Health Insurance .....	50,000
8106	FSA Expense .....	1,000
8107	Gross Wages - Grants .....	5,000
	Contribution to 403B .....	7,250

**TOTAL PERSONNEL .....** **711,250**

##### 8200 Maintenance

8201	Building Maintenance .....	40,000
8202	Grounds Maintenance .....	10,000

**TOTAL MAINTENANCE .....** **50,000**

8500	Dues & Subscriptions .....	2,000
8800	Miscellaneous Expense .....	1,500
8900	Professional Development .....	4,000

##### 8950 Professional Services

8950	Professional Services .....	30,000
------	-----------------------------	--------

**TOTAL 4 - SUPPORTING SERVICES .....** **951,200**

**TOTAL EXPENSE .....** **1,095,200**

**NET ORDINARY INCOME .....** **800**

## BOARD OF DIRECTORS

Thomas P. I. Goddard  
*President*

Nancy Parker Wilson  
*First Vice President*

Dwight Sipprelle  
*Second Vice President*

Dickson G. Boenning  
*Treasurer*

Paul McGreevy  
*Secretary*

David Brodsky

Richard I. Burnham

Nancy Cardoza

Dr. Elaine F. Crane

Nancy Cushing Evans

Jessica Hagen

Anne F. Hamilton

Harriet Harris

Susan Jacquet

Douglas Newhouse

Dennis McCoy  
*President Emeritus*

## LEADERSHIP COUNCIL

Sylvia Brown

Richard C. Crisson

Ronald Lee Fleming

David B. Ford

Edward W. Kane

Michael C. Kathrens

Matthew Keagle

Karen Lloyd

Robert Manice

Philip C. Marshall

Liz Mauran

Doug Riggs

Pieter N. Roos

Susan Sipprelle

John Tschirch

Gerald W. R. Ward

Edward L. Widmer

## STAFF

Ruth S. Taylor  
*Executive Director*

Ingrid Peters  
*Deputy Director & Director of Education*

Christine Gorham  
*Business Manager*

Bridget Hall  
*Public Engagement Associate*

Emily Hughes  
*Assistant Manager of Museum and Shop  
& Education Coordinator*

Bertram Lippincott III  
*Reference Librarian & Genealogist*

Sarah Long  
*Manager of Academic Services*

Tracey Mencio  
*Assistant Business Manager*

Asa Montgomery  
*Facilities Manager*

Bridget Newton  
*Registrar*

Molly Bruce Patterson  
*Collections Team Coordinator, Archivist  
& Manager of Digital Initiatives*

Heather Rockwood  
*Development and Marketing Associate*

Elizabeth Sulock  
*Curator of Living History*

Adams Taylor  
*Adjunct Curator of Exhibits and  
Special Projects*

Jenna Teachout  
*Manager of Museum and Shop*

## PUBLIC ENGAGEMENT

Kathleen Lowe  
Liz Spoden

## GUIDES

Richard Cope  
Pat Drislane  
Chuck Flippo  
Karen Flippo  
David Formanek  
Paul Hanson  
Lew Keen  
Elise Petrarca  
Jean Quinn  
Burt Quist

## VOLUNTEER

Sandra Bidlack  
*NHS Resource Center Volunteer*

## STAFF TRANSITIONS

Angela Brunetti, Nancy Cardoza,  
and Kevin Ryan left the employ  
of the NHS.

SINCE 1854, THE NEWPORT HISTORICAL SOCIETY HAS COLLECTED AND PRESERVED FIVE CENTURIES OF HISTORY AND CONTINUES TO DOCUMENT NEWPORT'S UNIQUE CONTRIBUTION TO OUR NATIONAL NARRATIVE. THE MISSION OF NHS IS ALSO TO CHRONICLE AND INTERPRET THIS HISTORY FOR A BROAD AUDIENCE, SO THAT KNOWLEDGE OF OUR PAST WILL CONTRIBUTE TO A DEEPER UNDERSTANDING OF THE PRESENT AND BETTER PREPARATION FOR THE FUTURE.





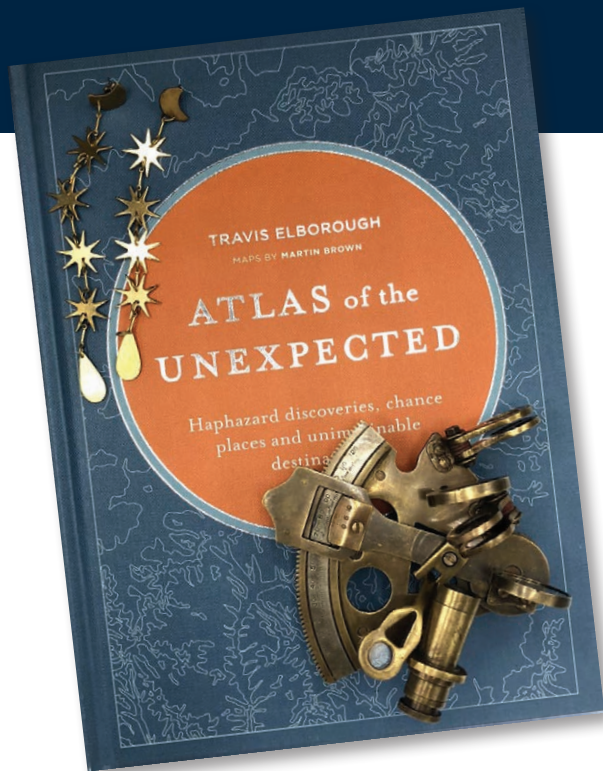
Newport  
Historical Society  
*History Starts Here*

Non-Profit Org.  
U.S. Postage  
PAID  
Newport, RI  
Permit 82

Newport Historical Society  
82 Touro Street  
Newport, Rhode Island 02840

[www.NewportHistory.org](http://www.NewportHistory.org)

# Endlessly Interesting, Unexpected Gifts



*Shop  
Newport  
History.*



Newport Historical Society  
**Museum & Shop**

127 Thames Street, Newport | 401.841.8770  
Open Daily 10-5pm  
Shop online at: [ShopNewportHistory.org](http://ShopNewportHistory.org)  
\$1 Flat Rate Shipping